





 @axiswake

 /axiswakeresearch

 @axiswake

 axiswake.com

AXIS WAKE RESEARCH 2019



#SHATTERINGTHESTATUSQUO



Shattering the Status Quo

Never satisfied with the norm, never resting on last year's best, Axis Wake Research continues to push forward. Since 2009, Axis builds its innovations year over year upon its Malibu foundation to make world-class towboats with edgy styling, untouchable value, and of course perfect wakes and waves. With five different models from 20 to 24 feet in both traditional and pickle-fork bow options, your 2019 Axis is waiting for you to shatter the status quo.



P.S.P.™ Performance Surf Package

Malibu's patented technologies come together on your 2019 Axis. Generate a pro-level wave with Surf Gate™, control it while you're riding with Surf Band™ and jack it up with the Power Wedge™ III.

WAKE STANDARDS

Wake Plus Hull™: Standard in all Axis towboats, this is what the competition keeps chasing. A perfect wake and a smooth ride with Malibu DNA.

Triple Hard Tank™ Ballast System: Tailored to work perfectly with each unique model, fill 800-1,200 pounds of hidden ballast automatically.

WAKE UPGRADES

Power Wedge III: Improved for 2019 to have five more degrees of lift and more usable positions, Power Wedge III is our patented hydrofoil that offers full adjustability and versatility for all riders. Power Wedge III instantly pulls down the back of the boat to make your wake bigger for more advanced riders or smaller for beginners. When it's time to get on plane, Power Wedge III automatically saves gas by getting the boat on top of the water faster.

Surf Gate: The original and still the best, Surf Gate generates a huge surf wave on either side of the boat without moving any weight. A true industry game changer and the most effortless surf system on the water.

Surf Band: Only available on Malibu and Axis, Surf Band puts you in control while you're riding. Adjust wake and wave settings, boat speed and tower speaker volume without yelling at the driver.

Plug 'n' Play Ballast System: Adds up to 1,500 pounds of ballast in the rear storage lockers and up to 650 pounds of ballast in the bow.

Auto-Set Wedge: Manually operated, reverse hydrofoil design that adds 1,000 pounds of water displacement.

TABLE OF CONTENTS

Axis Fleet	8
A Series	10
T Series	24
Axis Athletes	34
Trailers	36
Towers	38
Engines	39
Sound	40
Standard Packages & Options	42
Colors	43
Boat Builder	44



A20

LENGTH: 20' 6.10m
BEAM: 98" / 2.49m
DRAFT: 27" / 0.69m
CAPACITY: 11 people
FUEL: 42 gal / 159L
WEIGHT: 3,500 lbs. / 1,588kg
HULL TYPE: Wake Plus
TORQUE: 409-450ft-lbs.
MAX BALLAST: 3,970 lbs. / 1,801kgs.*



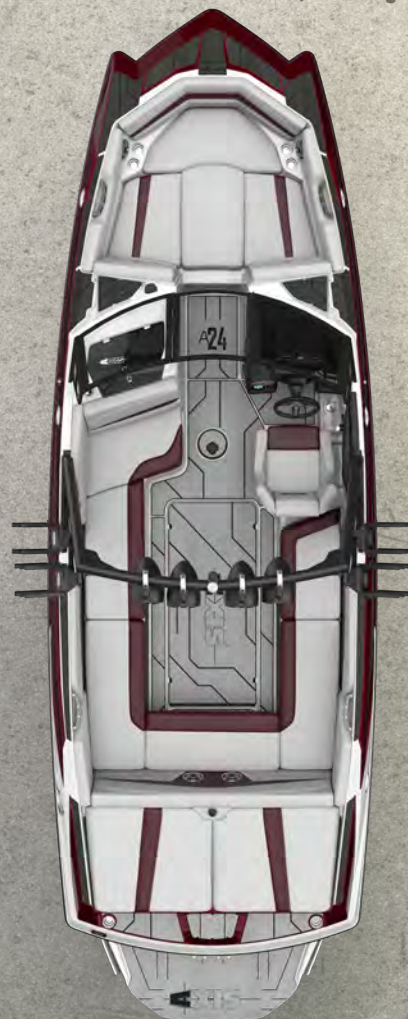
A22

LENGTH: 21' 11" / 6.68m
BEAM: 102" / 2.59m
DRAFT: 27" / 0.69m
CAPACITY: 15 people
FUEL: 48 gal / 181.7L
WEIGHT: 4,500 lbs. / 2,041kg
HULL TYPE: Wake Plus
TORQUE: 409-450ft-lbs.
MAX BALLAST: 4,115 lbs. / 1,867kgs.*



A24

LENGTH: 24' 5" / 7.44m
BEAM: 102" / 2.59m
DRAFT: 32" / 0.81m
CAPACITY: 17 people
FUEL: 76 gal / 287.7L
WEIGHT: 5,250 lbs. / 2,381kg
HULL TYPE: Wake Plus
TORQUE: 409-450ft-lbs.
MAX BALLAST: 4,845 lbs. / 2,198kgs.*



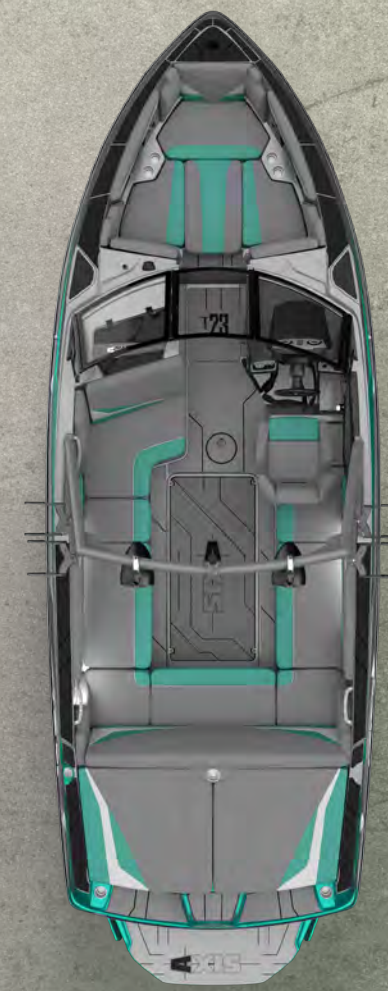
T22

LENGTH: 22' / 6.71m
BEAM: 102" / 2.59m
DRAFT: 27" / 0.69m
CAPACITY: 15 people
FUEL: 48 gal / 181.7L
WEIGHT: 4,200 lbs. / 1,905kg
HULL TYPE: Wake Plus
TORQUE: 409-450ft-lbs.
MAX BALLAST: 4,115 lbs. / 1,867kgs.*



T23

LENGTH: 23' 5" / 7.14m
BEAM: 102" / 2.59m
DRAFT: 27" / 0.69m
CAPACITY: 16 people
FUEL: 65 gal / 246L
WEIGHT: 5,000 lbs. / 2,268kg
HULL TYPE: Wake Plus
TORQUE: 409-450ft-lbs.
MAX BALLAST: 4,590 lbs. / 2,082kgs.*



2019 AXIS FAMILY

The 2019 Axis family includes the A-Series, featuring a roomy pickle-fork bow in 20, 22 and 24-foot lengths, and the T-Series, a traditional bow option in 22 and 23-foot lengths.

All 2019 Axis towboats come standard with the patented Wake Plus Hull, plush cabin upholstery, convenient walk-through design, even more gel coat options and soft grip flooring. In addition, the innovative Sliding Skybox Seat™ is now available on everything but the A20. With two series, five models and countless custom options, there's an Axis towboat for everyone.

NEW FOR 2019

- Improved Power Wedge III with five degrees more lift and integrated Surf Pipe (optional)
- Three new vinyl textures
- New, fully redesigned helm seat
- Helm phone holder (optional)
- Rear-Facing Sliding Skybox Seat on A22 and T23
- Black anodized swiveling clamp board racks with wider forks to accommodate surfboards (optional)
- Updated Surf Gate with Surf Band (optional)
- Updated swim platform
- Digitally Tuned Zoned Audio
- New speaker face plate designs
- New sound packs
- Ratcheting Chillax Hinges on flip-up seats (optional)
- New vinyl packages



NEW AXIS HELM SEAT

A SERIES



10 PICKLE-FORK BOW SEATING



COCKPIT SEATING



LED LIGHTING AND WETSOUNDS SPEAKERS THROUGHOUT



COMMAND CENTER WITH NEW STEREO CONTROLS

A20



At 20 feet, it's a great first boat or a solid go-to for families who want a lot of wake in a small package. It's easy to trailer, easy to store and the ultimate in maneuverability. With seating for 11 and the available Performance Surf Package, the A20 hangs with the big boats on all the tools to make a great wave in a package that fits in standard garages and size-restricted waterways.

- Wake Plus Hull
- Livorsi electronic throttle
- Walk-through design
- Illuminating 3-in-1 gauges
- Three new gel coat color options
- Skybox Rear-Facing Seat
- Plush upholstery
- Soft Grip flooring (optional)
- Bungee tower racks (optional)
- PTM clamping board racks (optional)
- Triple Hard Tank Ballast

Performance Surf Package (optional)

- Surf Gate
- Surf Band
- Power Wedge III



A22



The boat that started it all for Axis, the A22 was the first model and it's still one of the best sellers. Redesigned for 2019 with a fresh look, the A22 hits the sweet spot of size to make a big wake without a big footprint. Surf Gate, Surf Band, and the Power Wedge III combine to make a surf experience that you can customize while you're riding. After your set, relax in the big pickle-fork bow or the wraparound lounge and enjoy the luxury Axis has to offer.

- Wake Plus Hull
- Livorsi electronic throttle
- Walk-through design
- Illuminating 3-in-1 gauges
- Three new gel coat color options
- Plush upholstery
- Soft Grip flooring (optional)
- Rear-Facing Sliding Skybox Seat (optional)
- Bungee tower racks (optional)
- PTM clamping board racks (optional)
- Triple Hard Tank Ballast

- Performance Surf Package (optional)
- Surf Gate
 - Surf Band
 - Power Wedge III



A24



At 24 feet, this is the biggest boat in the Axis line. With seating for 17 and 4,875 pounds of available ballast loading down the patented Wake Plus Hull, the A24 delivers a truly pro-level wake with no one left behind. Opt for the Performance Surf Package to bring the ocean inland with Surf Gate, Surf Band and the Power Wedge III. On top of that, upscale amenities like the new Soft Grip foam flooring, Rear-Facing sliding Skybox Seat and enormous pickle-fork bow make the A24 the undisputable total package.

- Wake Plus Hull
- Livorsi electronic throttle
- Walk-through design
- Illuminating 3-in-1 gauges
- Three new gel coat color options
- Plush upholstery
- Soft Grip flooring (optional)
- Rear-Facing Sliding Skybox Seat (optional)
- Bungee tower racks (optional)
- PTM clamping board racks (optional)
- Triple Hard Tank Ballast

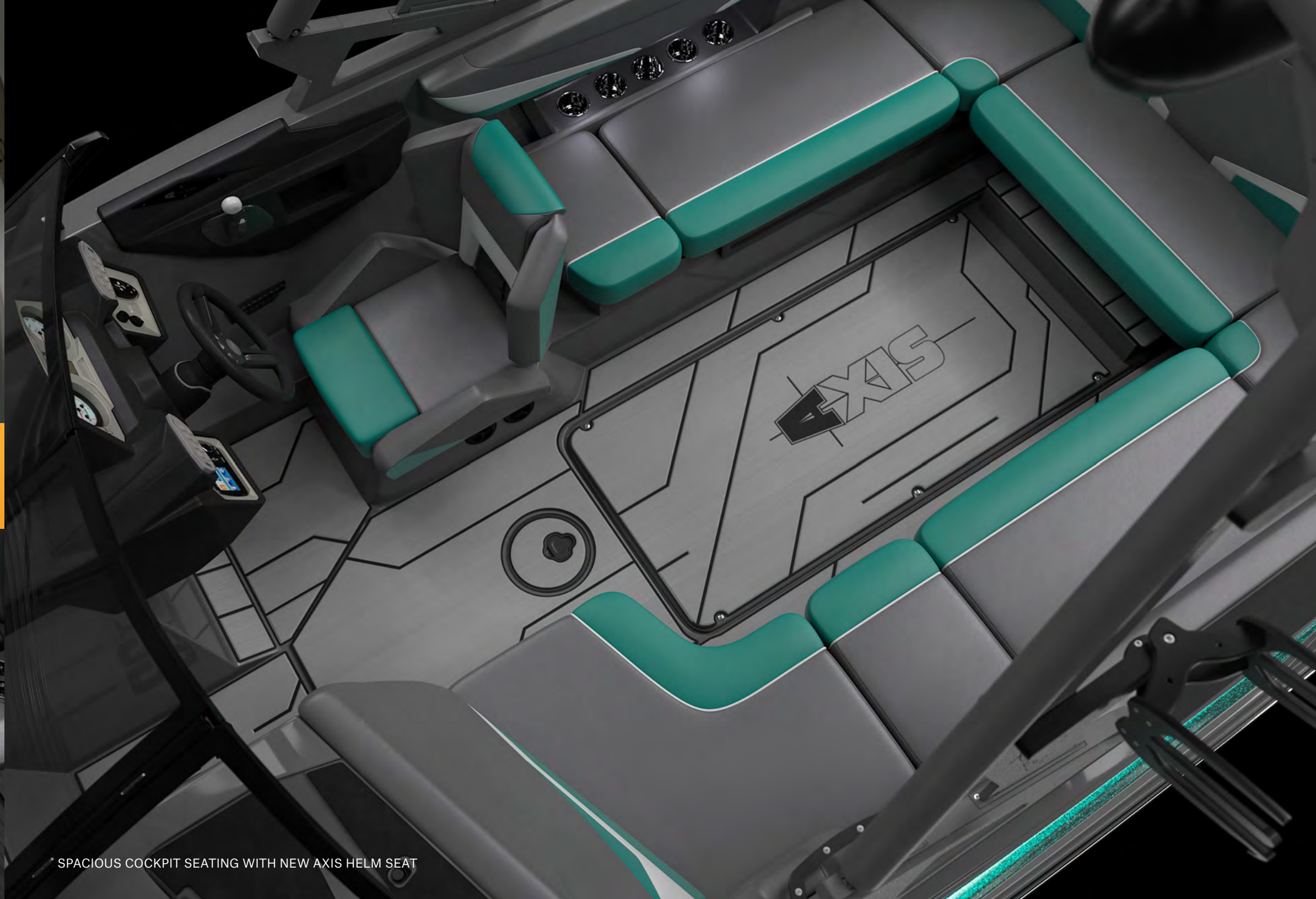
- Performance Surf Package (optional)
- Surf Gate
 - Surf Band
 - Power Wedge III





ILLUMINATING 3-IN-1 GAUGES

T SERIES



SPACIOUS COCKPIT SEATING WITH NEW AXIS HELM SEAT



TRADITIONAL BOW SEATING



COMMAND CENTER WITH NEW STEREO CONTROLS

T22



Classic traditional bow lines in one of the most popular size classes on the market are what the T22 hangs its hat on. Throw in the effortless Wake Plus Hull to generate wakes and waves in any conditions and you've got the makings of something great. Add to that a host of available features like Surf Gate, Surf Band, the Power Wedge III, and the Rear-Facing Sliding Skybox Seat and you know why there are so many T22's on the water.

- Wake Plus Hull
- Livorsi electronic throttle
- Walk-through design
- Illuminating 3-in-1 gauges
- Three new gel coat color options
- Plush upholstery
- Soft Grip flooring (optional)
- Rear-Facing Sliding Skybox Seat (optional)
- Bungee tower racks (optional)
- PTM clamping board racks (optional)
- Triple Hard Tank Ballast

Performance Surf Package (optional)

- Surf Gate
- Surf Band
- Power Wedge III



T23



At 23.5 feet with seating for 16, the T23 is a big, traditional-bow with all the features you need to make memories—and a phenomenal wake. The available Power Wedge III, Surf Gate and Surf Band refine the T23's wave potential into thigh-high, glassy swells that you can control while you're surfing. Inside, the T23 is all tech and luxury. The LCD screen and classic analog gauges at the helm give you control over the entire T23 experience and the sliding, rear-facing Skybox Seat gives passengers a better view of the action.

- Wake Plus Hull
- Livorsi electronic throttle
- Walk-through design
- Illuminating 3-in-1 gauges
- Three new gel coat color options
- Plush upholstery
- Soft Grip flooring (optional)
- Rear-Facing Sliding Skybox Seat (optional)
- Bungee tower racks (optional)
- PTM clamping board racks (optional)
- Triple Hard Tank Ballast

- Performance Surf Package (optional)
- Surf Gate
 - Surf Band
 - Power Wedge III





TOM FOOSHEE • TONY CARROLL • JOHNNY STEIG • AUSTIN KEEN • BEC GANGE



AXIS TRAILERS

Made in the same factory as your new boat, Axis trailers are custom-fit to each model. Beyond that you can customize your trailer with color-match paint and a variety of Axis-branded wheels. Backed by a five-year warranty and made in America with premium materials, your Axis trailer will look as good as your new Axis for years to come.

STANDARD

- 5-Year Limited Warranty
- NMMA-Certified
- Tubular-Steel Design
- Swing Tongue
- Torsion Axles w/ Vault Bearing Lubrication
- Hydraulic Surge Disc Brakes, All Axles
- SS Aluminum-Coated Brake Lines
- 14" Chrome Directional
- Grand Ride Radial Trailer Tires
- Surface Mount GLO-Lamp LED Brake Lamps
- 7-Round Tow Vehicle Plug
- Waterproof Wire Harness
- 1,400-pound XLT Winch
- Bow Safety Strap
- SeaDek Non-Skid Mat
- Polyurethane Bow Roller
- Removable Guidepost
- Prop-Guard Rollers with Stainless Steel Roller
- Detergent/Iron-Phosphate Frame Pre-Treatment
- Urethane Primer
- Urethane Top Coat

OPTIONS

- Alloy Wheel Upgrade
- Spare Tire Wheel Assembly, Chrome Directional 14" Tandem Axle
- Spare Tire Wheel Assembly, Galvanized 14" Tandem Axle
- Spare Tire Wheel Assembly, Alloy 14" Tandem Axle
- Color-Match Paint
- Elite Shield Trailer
- Elite Shield Fenders
- Galvanized Frame
- Painted-Over Elite Shield Galvanized Frame
- SS Retractable Transom Straps

TRICKED OUT

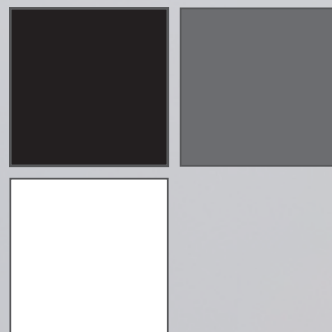
- Color-Match Paint
- 18" Wheel package with paintable inserts
- 11"-Wide Fenders
- Runway Lighting
- 5-Bar Aluminum Tread on Steps & Fenders
- 2-Tone Paint or Polished Stainless Steel Fenders
- Stainless Retractable Transom Straps
- XR84 Self-Latching Actuator Stainless
- Transom and bow steps with diamond plate tread
- Slimline LED Lighting



AXIS TOWERS

No Axis is complete without its matching tower. Make it your own with speaker packages, swiveling bungee board racks or swiveling clamp board racks. New for 2019, opt for an accent color to perfectly match your boat.

Options

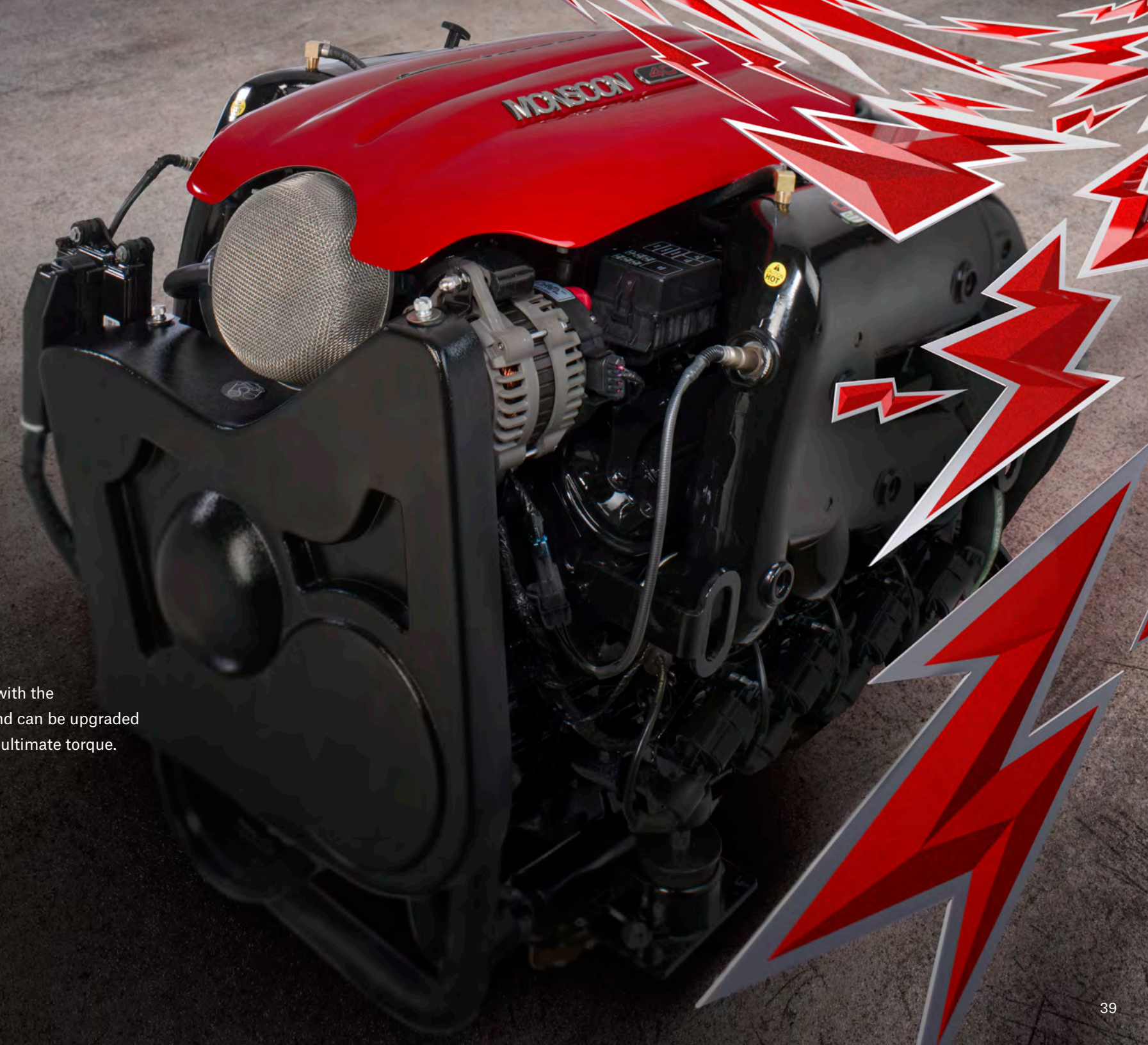


MONSOON ENGINES

All Axis models come standard with the Monsoon 409 6.0-liter engine and can be upgraded to the Monsoon 450 6.0 liter for ultimate torque.

MONSOON 409
6.0L

MONSOON 450
6.0L HO



AXIS SOUND

No set is complete without a playlist and with Axis you have your choice of crystal-clear Wet Sounds audio packages. Sync to Bluetooth while you’re in the boat, or for ultimate control, dial in your audio levels while you’re riding with Surf Band.

SOUNDPACK 1

- Wet Sounds Stereo with Bluetooth
- 4 Wet Sounds 6.5-inch speakers, silver grills
- Optional transom remote

SOUNDPACK 2.2

- Wet Sounds Stereo with Bluetooth
- 6 Wet Sounds 6.5-inch speakers, silver grills
- 2 ICON8 tower speakers, black or white can option
- 10-inch subwoofer
- Digitally Tuned HTX2 & HTX6 Amps
- Transom remote

SOUNDPACK 2.4

- Wet Sounds Stereo with Bluetooth
- 6 Wet Sounds 6.5-inch speakers, silver grills
- 4 ICON8 tower speakers, black or white can option
- 10-inch subwoofer
- Digitally Tuned HTX2 & HTX6 Amps
- Transom remote

SOUNDPACK 3.2

- Wet Sounds Stereo with Bluetooth
- 6 Wet Sounds 6.5-inch speakers, black grills
- 2 REV 10 tower speakers, black or white can option
- 12-inch subwoofer
- Digitally Tuned SYN-DX2 & SYN-DX6 Amps
- Transom remote

SOUNDPACK 3.4

- Wet Sounds Stereo with Bluetooth
- 6 Wet Sounds 6.5-inch speakers, black grills
- 4 REV 10 tower speakers, black or white can option
- 12-inch subwoofer
- Digitally Tuned SYN-DX2 & SYN-DX6 Amps
- Transom remote



STANDARD AND OPTIONS CUSTOMIZATION

ENGINE	A20	T22	A22	T23	A24
Monsoon 409 6.0L CAT	●	●	●	●	●
Monsoon 450 6.0L HO CAT	○	○	○	○	○
Salt Series Available	○	○	○	○	○
Closed Cooling Option	○	○	○	○	○

TOWER					
AW15 Tower Light Bar	○	○	○	○	○
AW15 Tower quick release	○	○	○	○	○
AW 15 Colors: black, white, or charcoal (black is standard)	○	○	○	○	○
Commercial Sewing Bimini with Rope and Surfboard Storage	○	○	○	○	○
Commercial Sewing Bimini with Rope Storage	○	○	○	○	○
Great Lakes Bimini with Surf Board Storage	○	○	○	○	○
Great Lakes Bimini	○	○	○	○	○
Spinner Board Racks	○	○	○	○	○
PTM Clamping Board Racks	○	○	○	○	○
PTM 140° Panoramic Mirror Tower	○	○	○	○	○
14" PTM Black Composite Mirror	●	●	●	●	●

PERFORMANCE					
Axis Surf Gate with Surf Band	○	○	○	○	○
Zero Off GPS Speed Control with compass	○	○	○	○	○
Plug 'n Play with Auto Vent	○	○	○	○	○
Plug 'n Play Ballast System	○	○	○	○	○
Power Wedge II	○	○	○	○	○
Auto-Set Wedge	○	○	○	○	○
Speed Prop	○	○	○	○	○
Standard Prop	●	●	●	●	●
High-Altitude/Torque Prop	○	○	○	○	○
Silent Tip Exhaust	○	○	○	○	○
Surf Pipe	○	○	○	○	○

STD ●
OPT ○
N/A ●

SAFETY, COMFORT & CONVENIENCE	A20	T22	A22	T23	A24
Driver seat swivel	○	○	○	○	○
Removable Carpet	○	○	○	○	○
Soft Grip Flooring	○	○	○	○	○
Underwater LEDs	○	○	○	○	○
Battery Charger	○	○	○	○	○
Under-Seat LED Lights: red, white, or blue	○	○	○	○	○
Axis-branded Drop-In Igloo Cooler	○	○	○	○	○
Pull-Up Cleats	○	○	○	○	○
Flip-Up Bolster Seats	○	○	○	○	○
Chillax Cockpit Flip-Up Seat	○	○	○	○	○
Skybox Seating	●	●	●	●	●
Rear-Facing Sliding skybox seat	●	●	●	●	●
Non-Skid Deck Track	○	○	○	○	○
Stainless-Steel Cup Holders	○	○	○	○	○
2-Outlet Heater	○	○	○	○	○
3-Outlet Heater	○	○	○	○	○
5-Outlet Heater	●	●	●	●	○
Docking Lights	○	○	○	○	○
Depth-Finder	○	○	○	○	○
Dual Battery Switch Option	○	○	○	○	○
Ski Pylon	○	○	○	○	○
Second Gorilla Fin	○	○	○	○	○
Cell phone holder	○	○	○	○	○

TRAILERS					
Tandem	○	○	○	○	○
Tri-Axle	●	●	●	●	○

STEREO					
Sound Pack 1	○	○	○	○	○
Sound Pack 2.2	○	○	○	○	○
Sound Pack 2.4	○	○	○	○	○
Sound Pack 3.2	○	○	○	○	○
Sound Pack 3.4	○	○	○	○	○

	A20	T22	A22	T23	A24
New glove box	●	●	●	●	●
Speed control	●	●	●	●	●
AW15 Tower	●	●	●	●	●
Livorsi Electronic Throttle (black)	●	●	●	●	●
Above-engine warming bin w/ drain	●	●	●	●	●
Swivel driver's seat	●	●	●	●	●
LED storage lighting	●	●	●	●	●
Ventless fuel-fill system	●	●	●	●	●
Triple Hard-Tank Ballast System	●	●	●	●	●
Single Gorilla Fin	●	●	●	●	●

COLOR OPTIONS

1	2	3	4	5
6	7	8	9	10
11	12	13	14	

1. Arctic White

2. Light Graphite

3. Graphite

4. Driftwood

5. Ebony

6. Indy Red

7. Hot Orange
8. Axis Green

9. Sunny Summer Yellow

10. Cherry Wine

11. Zephyr Blue

12. Dark Blue

13. Vapor Blue

14. Azure Blue

1	2	3	4	5
6	7	8	9	10
11	12	13	14	15

1. Machine Silver Metallic

2. Gunmetal Graphite Metallic

3. Mocha Bronze Metallic

4. Ebony Bronze Metallic

5. Indy Red Metallic

6. Hot Orange Metallic

7. Axis Green Metallic

8. Sunny Summer Yellow Metallic
9. Cherry Wine Metallic

10. Zephyr Blue Metallic

11. Dark Blue Metallic

12. Vapor Blue Metallic

13. Azure Blue Metallic

14. Purple Metallic

15. Pink Diamond Metallic



EXPERIENCE OUR WORLD-RENOVED CRAFTSMANSHIP

Every Axis Wake Research boat sold across the globe is meticulously handcrafted by highly trained technicians at our factories in Loudon, Tenn., and Albury, New South Wales, Australia. From spraying the outer gelcoat to laminating seven layers of fiberglass to installing and polishing interior and exterior hardware to hand-stitching and fitting the upholstery, every Axis is built by hand with incredible attention to detail. We conduct thorough quality inspections after every step in the production process, and we lake-test all boats on site. Our goal is to ensure that your Axis leaves the factory in as perfect condition as human hands can make. Schedule a tour by calling (865) 458-5478 or email research@axiswake.com

TENNESSEE/GLOBAL HEADQUARTERS

5075 Kimberly Way,
Loudon, TN 37774
(865) 458-5478

CALIFORNIA

One Malibu Court,
Merced, CA 95341
(209) 383-7469

AUSTRALIA

813 Hope Court,
Albury, NSW 2640, Australia
(02) 6040-1174