

PRINCESS X80
CUSTOMER ADVANCED INFORMATION PACK

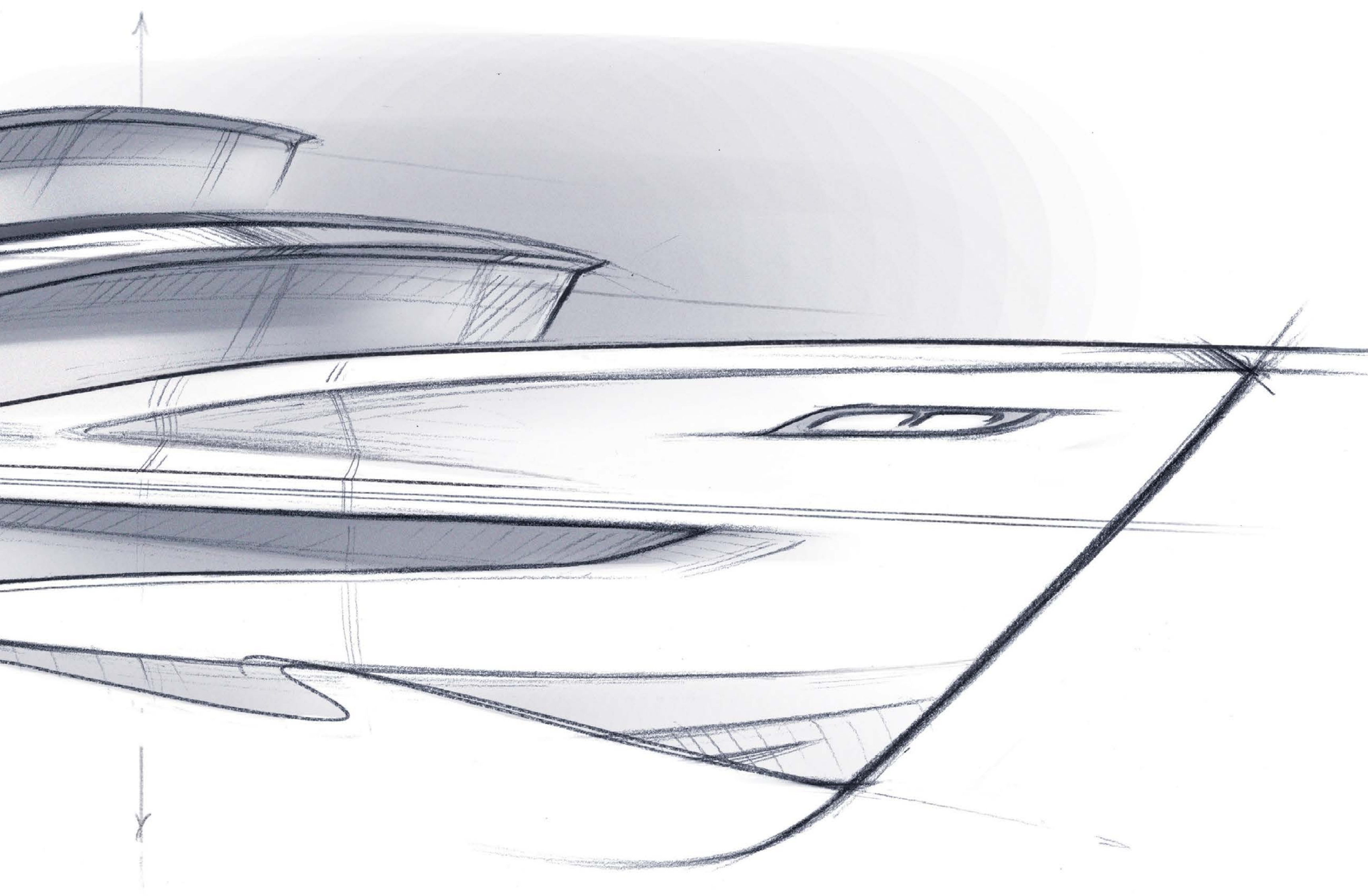




CONTENTS

PRINCESS X80

Introduction	3
X95 and X80	4
Design	5
Profiles	6
Exterior	7
Interior	14
Layouts	24
Principal Dimension	28
Detailed Specification	29
Further Information	35



INTRODUCTION

IntoXicating, eXtreme, eXciting...

Following in the wake of the X95, the X80 is not trying to fit into a niche that already exists. She is at once everything you know, yet nothing you recognise. The X80 has been developed to offer a unique boating lifestyle, one that is tailored to how each owner wants to use their yacht. The X80 is at once an open-concept dream, whilst retaining a host of distinct spaces, creating boundaries without walls. Boasting class-leading outdoor space, she has been painstakingly designed to offer the most versatile and accommodating experience, while keeping design and style at the forefront.

Princess Yachts' long-standing naval architect, Olesinski, has partnered with Italian design heavyweights Pininfarina to create the ultimate in avant-garde yacht design. The X80 makes a statement wherever she goes, and her muscular yet timeless lines give her an air of perpetual motion, always ready to start her next adventure.

The X Class may be ground-breaking, but they still remain a Princess. Beautiful design, flawless interior fit out and an unrivalled aftersales experience are a staple across the fleet, and the X80 is no different. The X80 'Superfly' is a true Princess: she is always moving forward and shattering eXpectations.

THE X95 AND X80

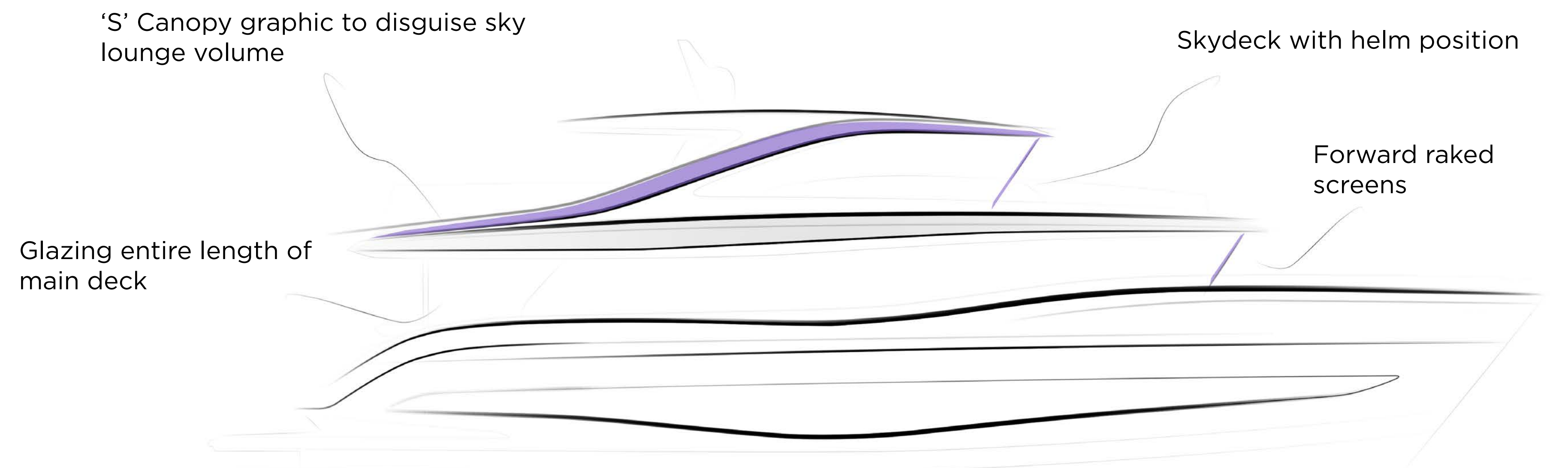
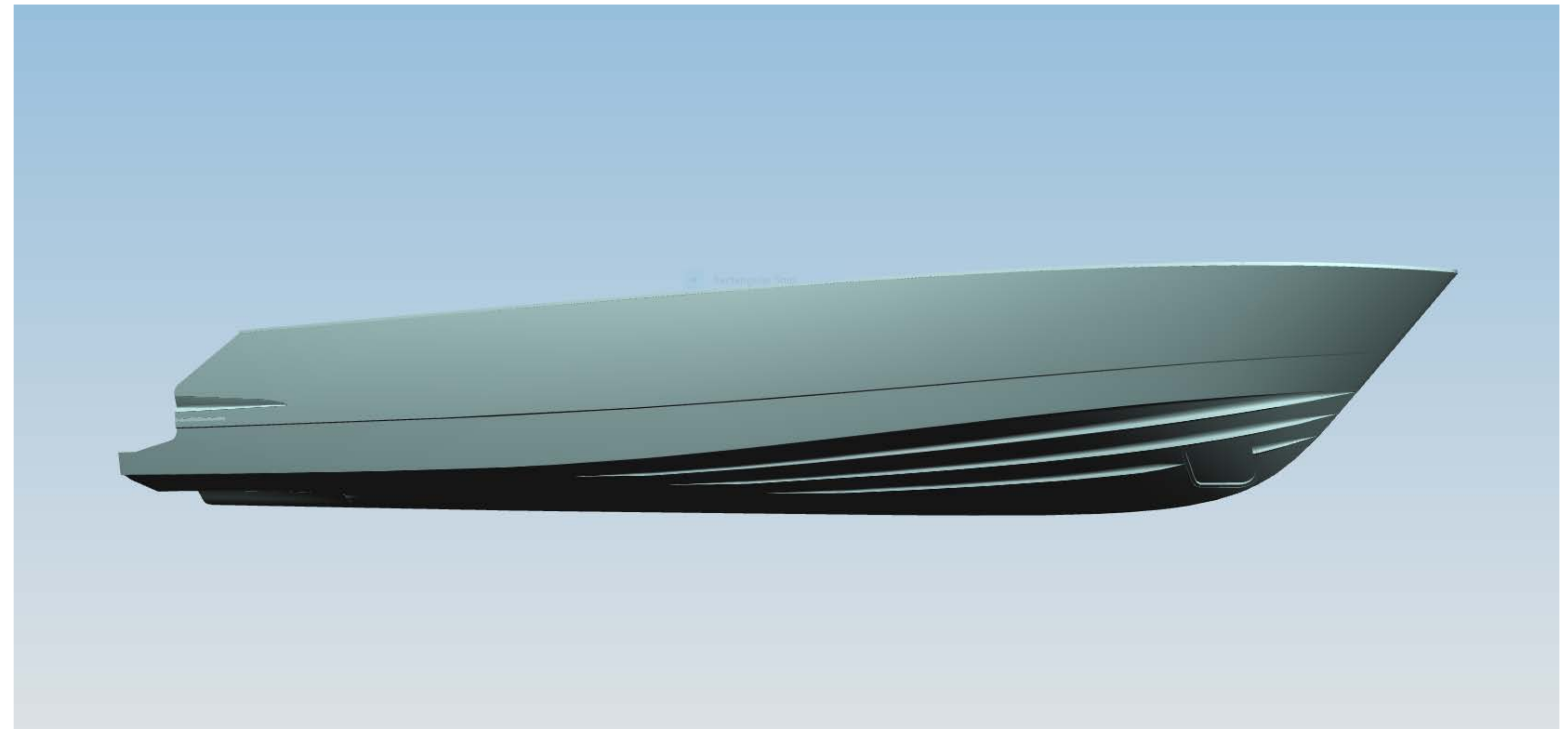


DESIGN

Over recent years there has been a quiet revolution in the methods used to design a Princess hull. Years of experience building fast and seaworthy hulls are now complimented by the cutting edge in simulation techniques. This involves applying machine learning methods to computational fluid dynamic results in order to select the optimum design parameters for each specific application.

For the X80, this approach has led to the evolution in well-proven qualities of a hull by improving efficiency across the speed range whilst ensuring the highest levels of sea-keeping and predictable handling.

The X80's raked screens propel her forward, complimented by clean, refined and full surfaces. The X80 brings the outside in through the maximisation of glazing which flows along the entire length of the main deck.



PROFILE

The stature and gravitas of the X80 profile is defined through the increased height of the bulwarks, topsides and enclosed wheelhouse. Her 'S' shaped canopy flows into the flybridge deck to balance the visual weight and disguise the volume of the expansive sky lounge.



WHITE HULL



WHITE HULL WITH GRAPHITE HARDTOP AND OYSTER BRIDGE DECK HOUSE

EXTERIOR



EXTERIOR



EXTERIOR



EXTERIOR
FORWARD FLYBRIDGE



EXTERIOR
FORWARD FLYBRIDGE



EXTERIOR
FOREDECK



MAIN DECK
COCKPIT



MAIN DECK
SALOON



MAIN DECK
GALLEY



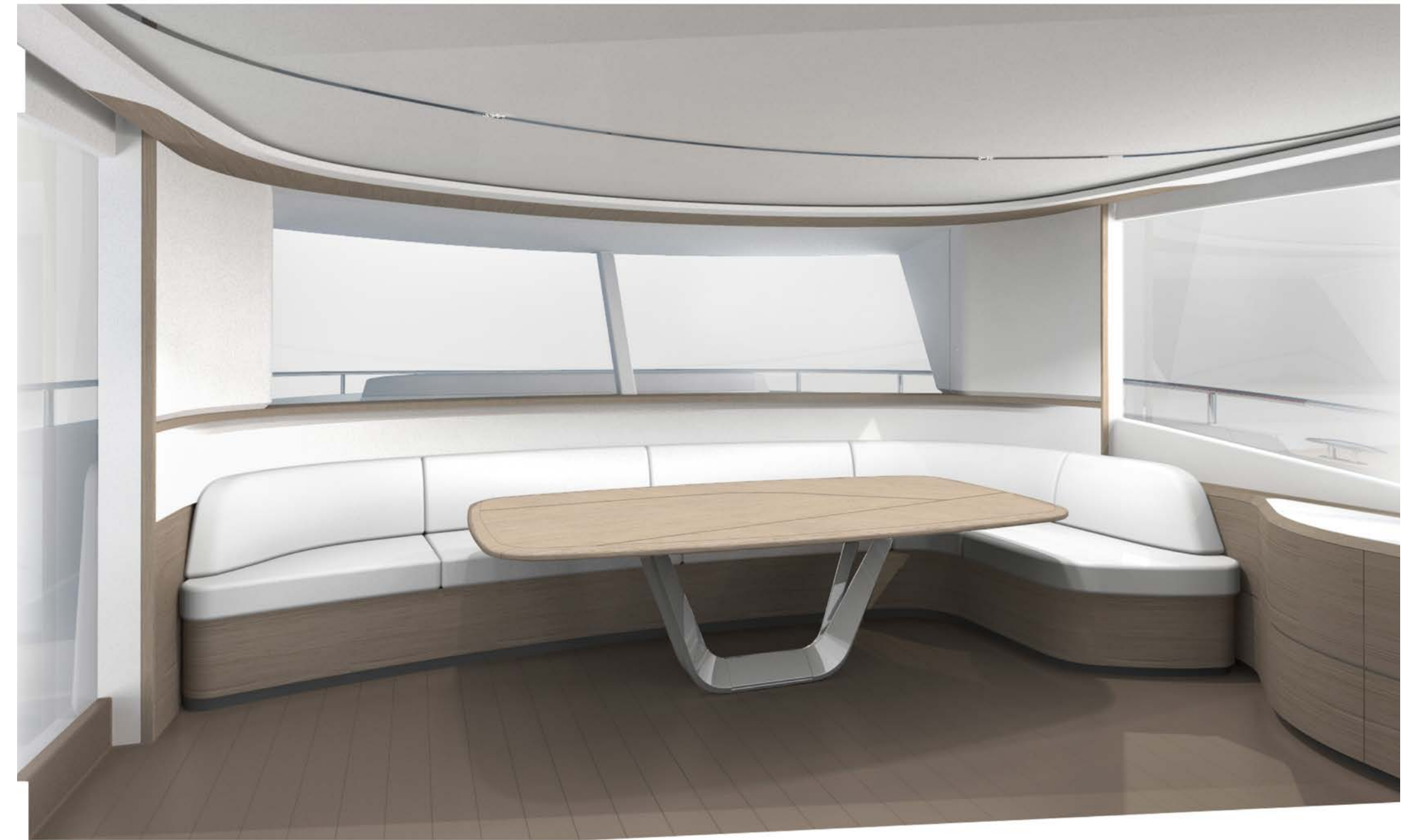
MAIN DECK
SALOON AND GALLEY AREA



MAIN DECK
FORWARD DINING AREA



MAIN DECK
FORWARD DINING AREA



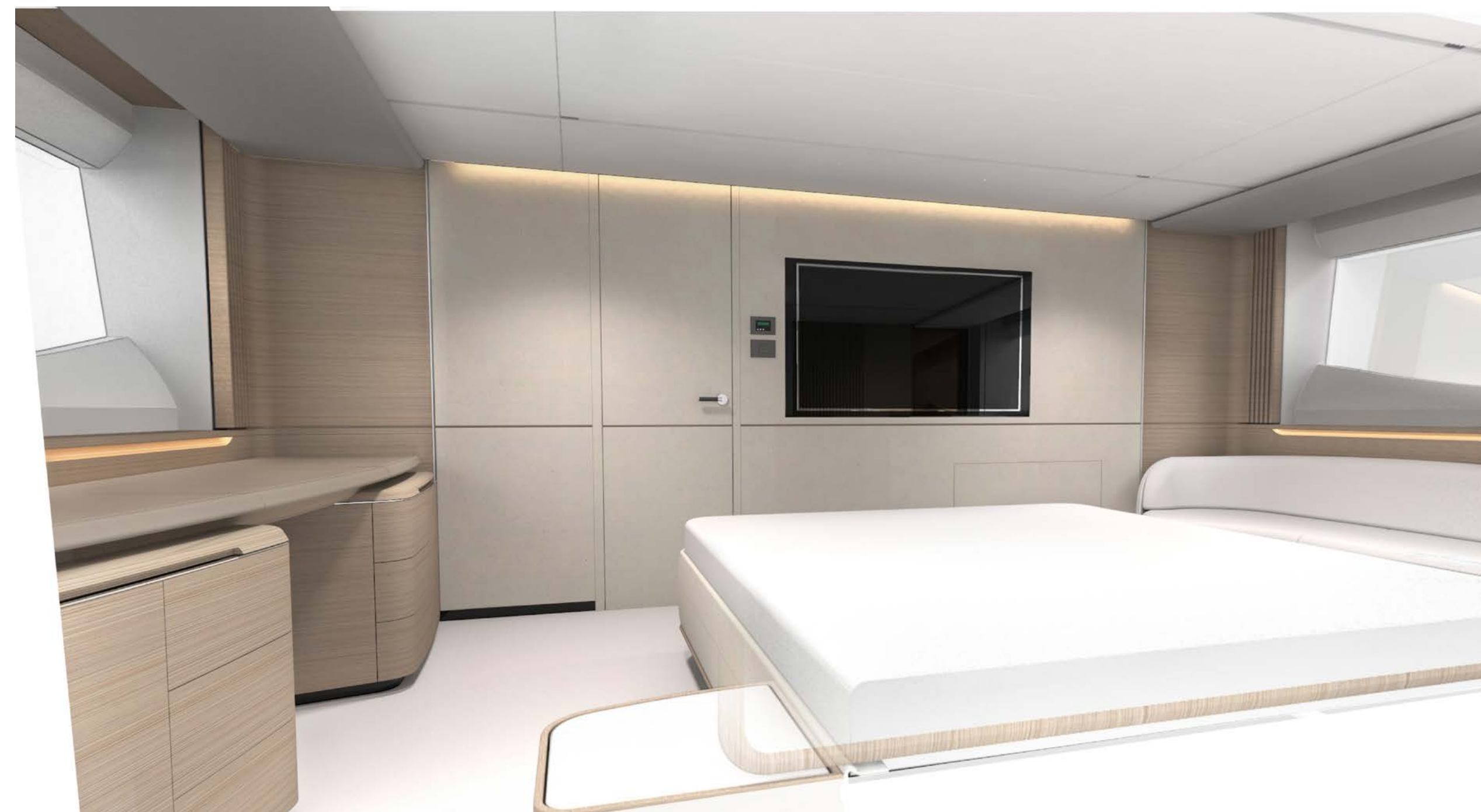
SKYLOUNGE



LOWER DECK
MASTER STATEROOM



LOWER DECK
MASTER STATEROOM



LOWER DECK
MASTER BATHROOM



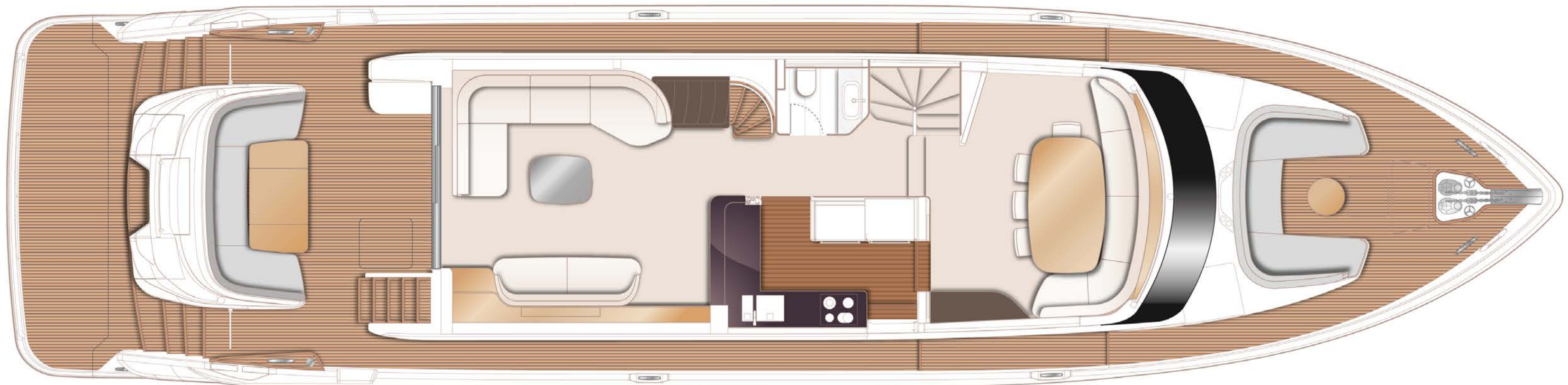
MAIN DECK
MASTER STATEROOM



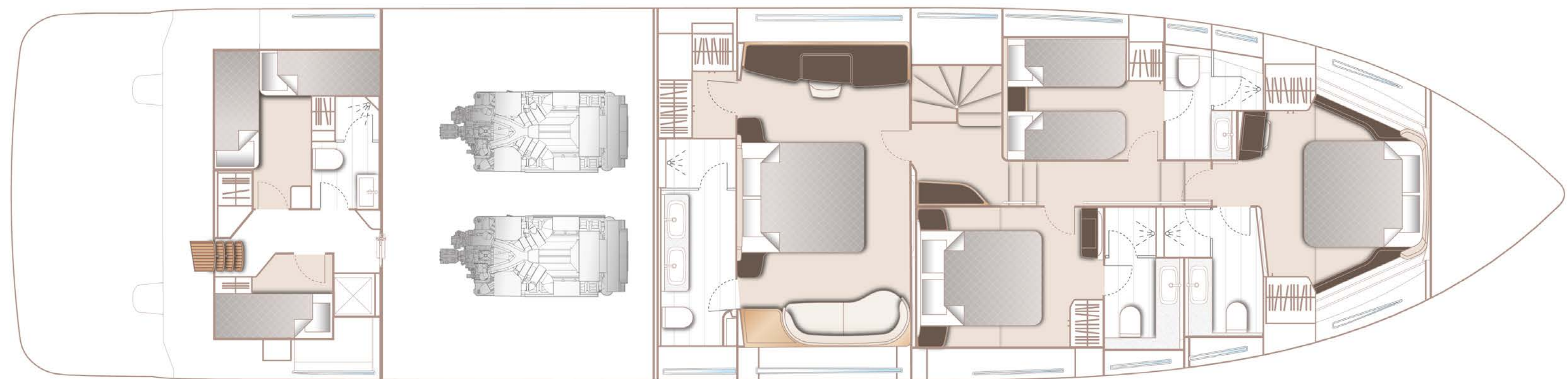
LAYOUT



FLYBRIDGE AND SKYLOUNGE

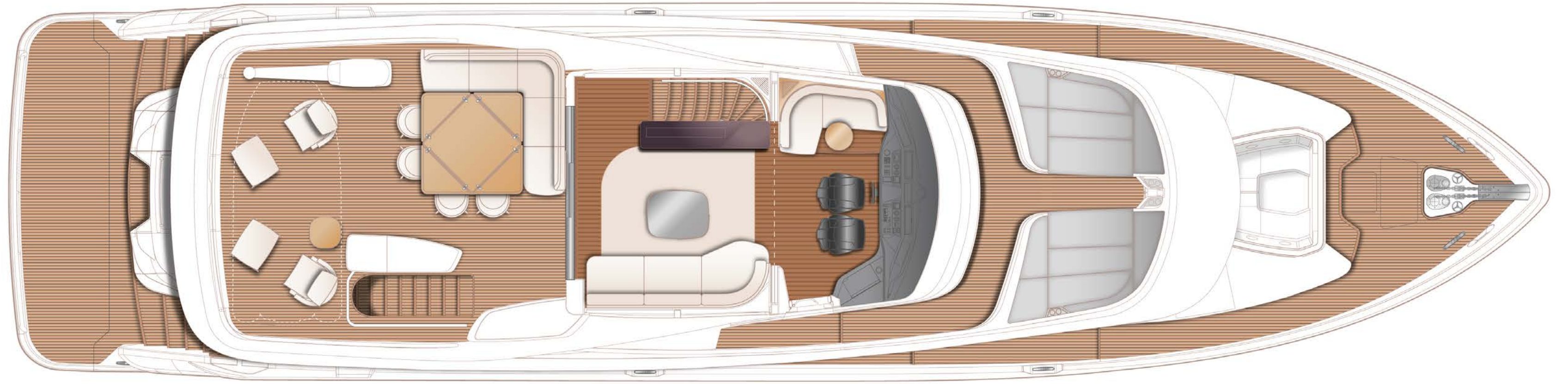


MAIN DECK

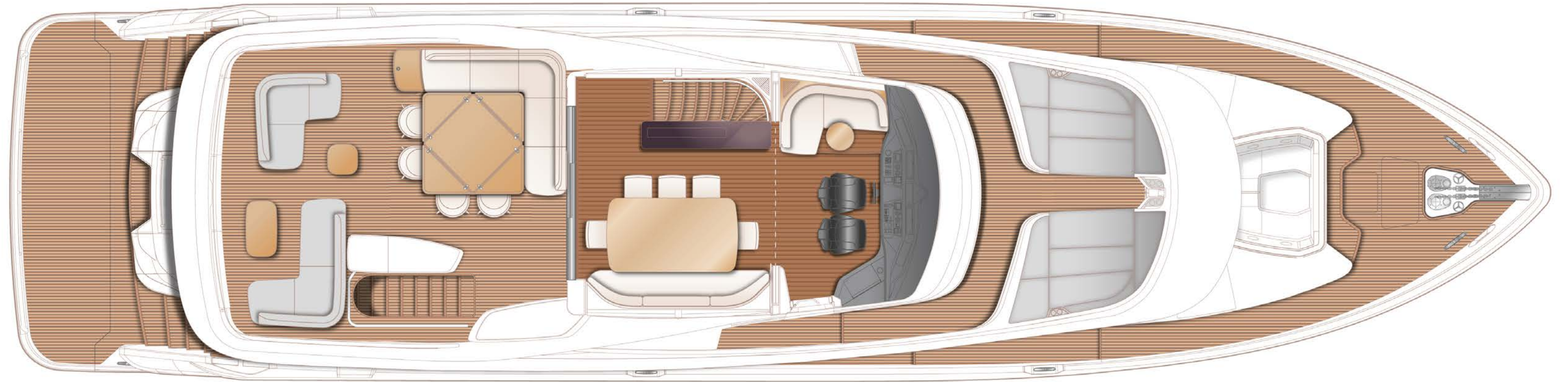


LOWER DECK

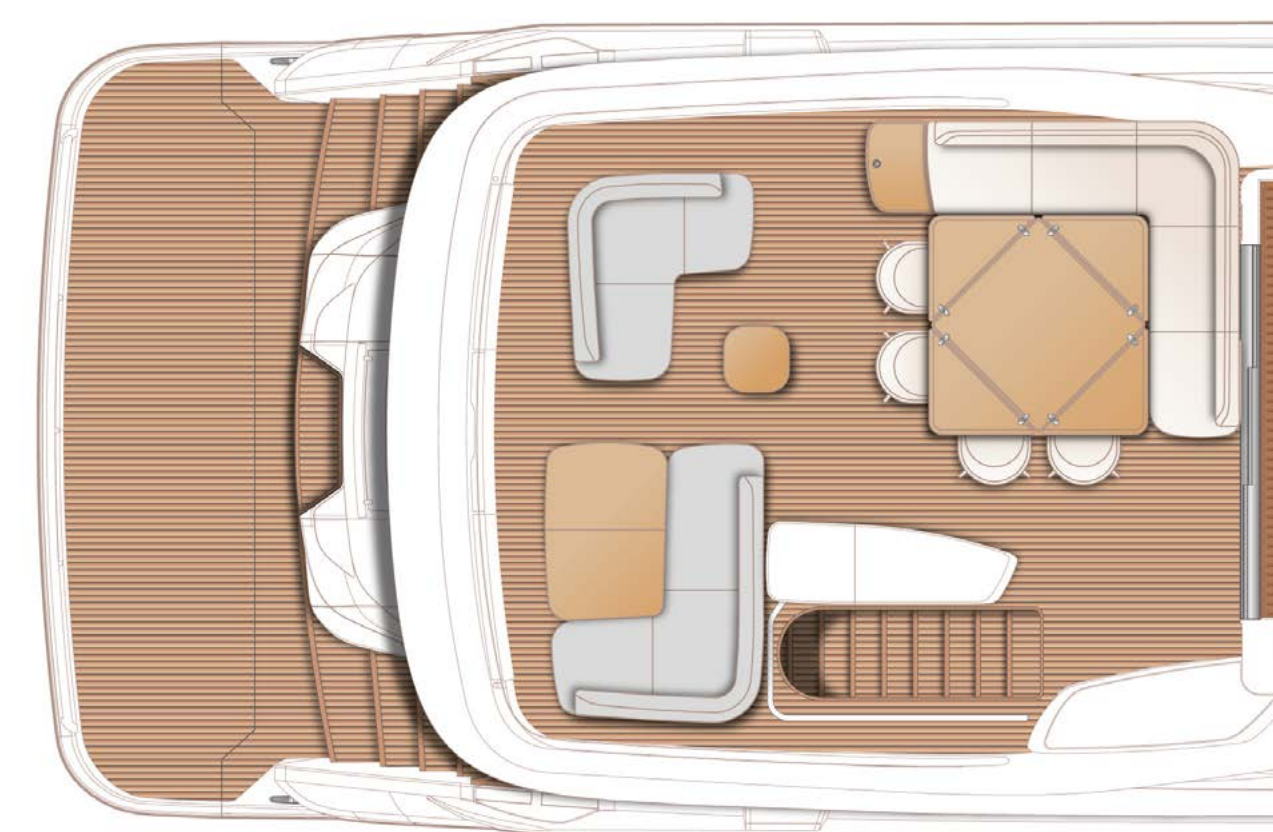
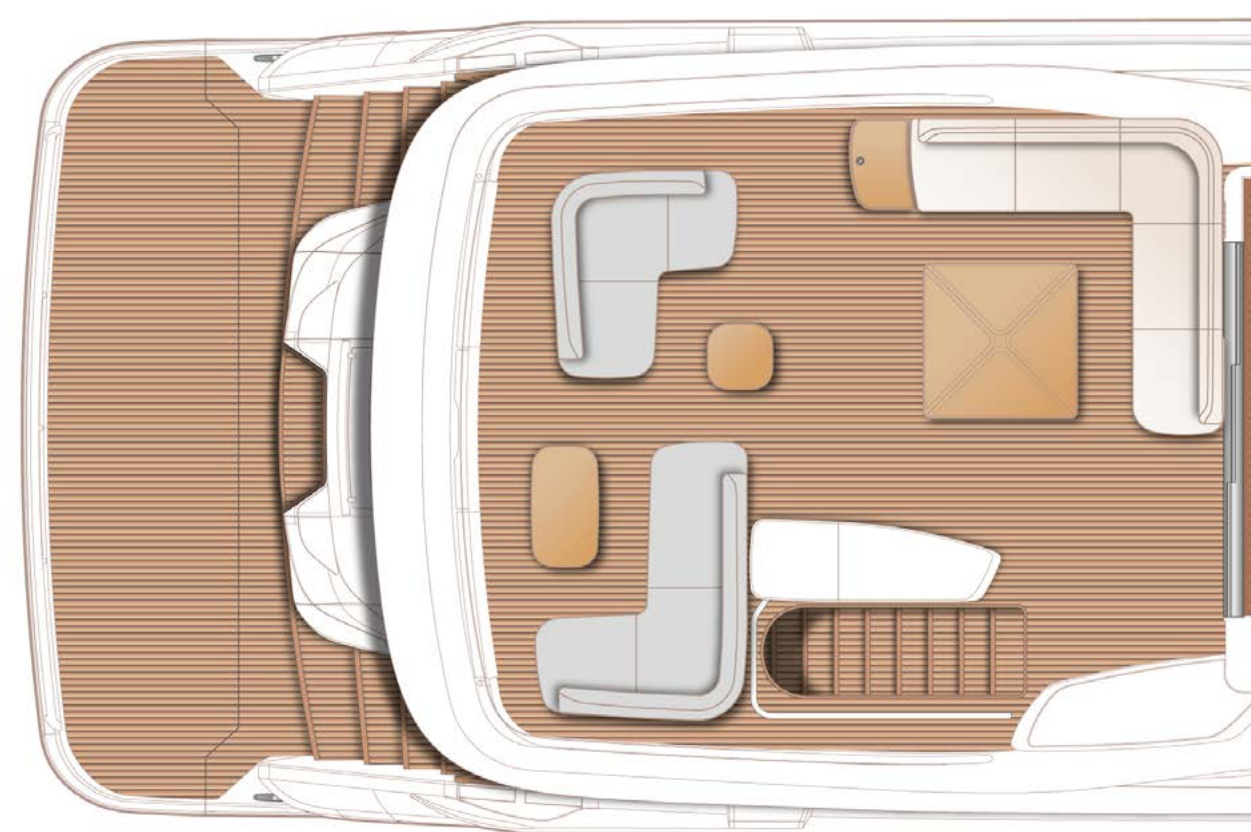
OPTIONAL LAYOUTS FLYBRIDGE



FLYBRIDGE WITH OPTIONAL CRANE, AFT SEATING AND SECOND HELM SEAT

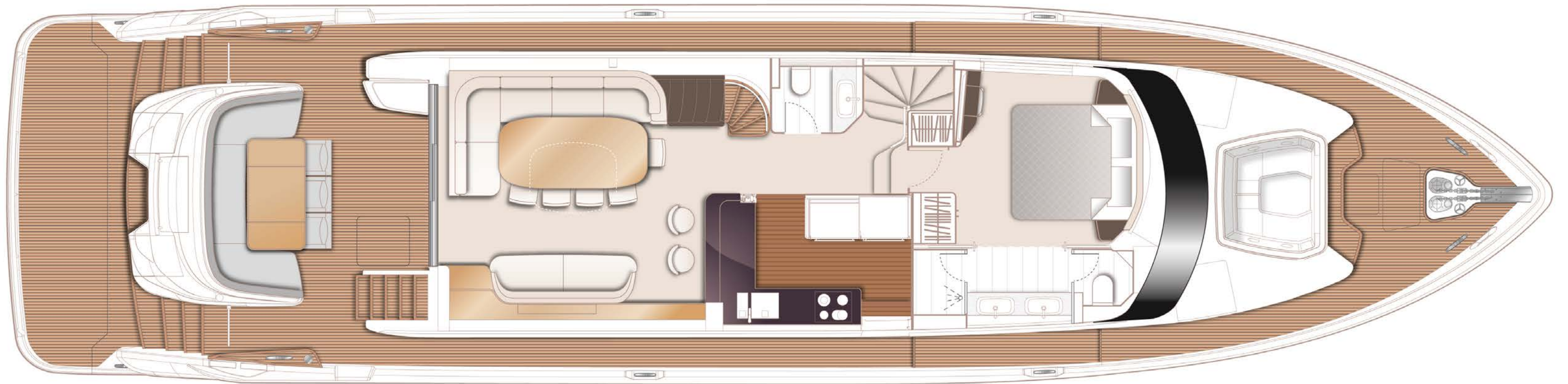


FLYBRIDGE WITH OPTIONAL AFT SEATING, COOLBOX, DINING AREA AND SECOND HELM SEAT



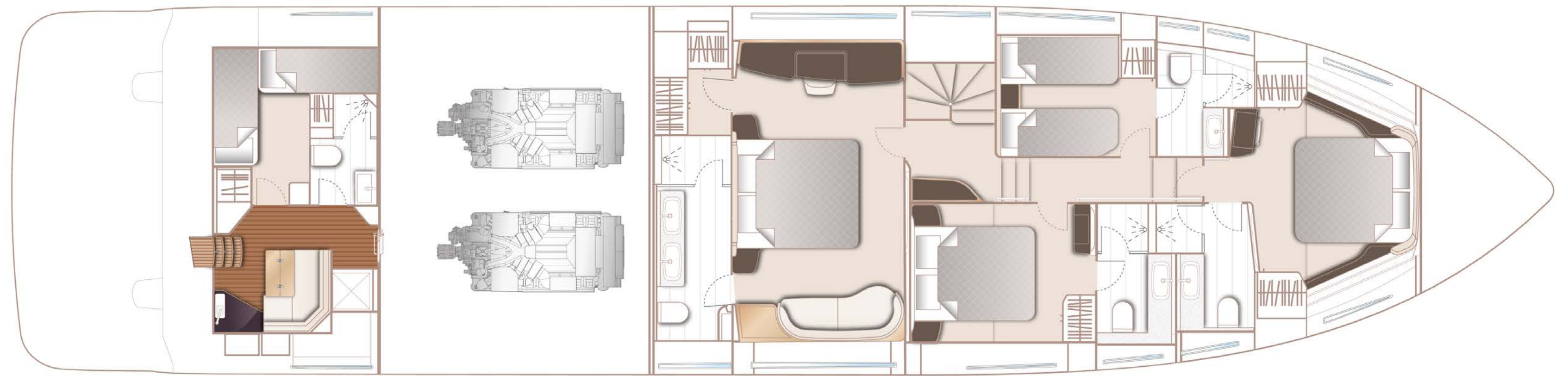
FLYBRIDGE WITH OPTIONAL AFT SEATING AND COFFEE/DINING TABLE AND COOLBOX

OPTIONAL LAYOUTS
MAIN DECK

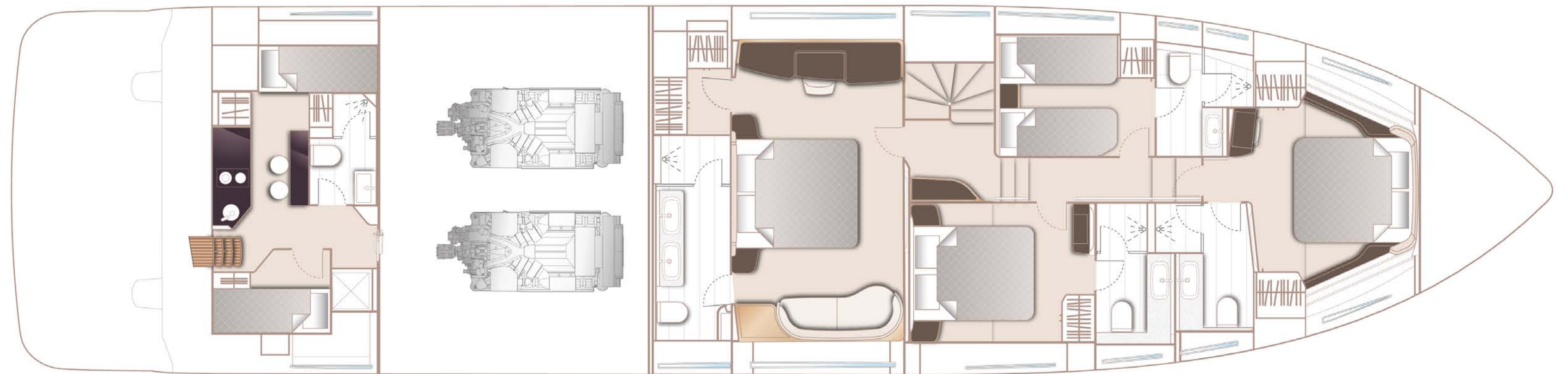


MAIN DECK WITH OPTIONAL MASTER STATEROOM, DINING TABLE AND SPA BATH

OPTIONAL LAYOUTS LOWER DECK



LOWER DECK WITH ALTERNATIVE CREW CABIN OPTION 1 (NOT AVAILABLE WITH GLENDINNINGS 20)



LOWER DECK WITH ALTERNATIVE CREW CABIN OPTION 2

SPECIFICATION

PRINCIPAL DIMENSIONS

Length overall (incl.pulpit)	82' 7" 25.17m
Length overall (excl. pulpit)	82' 7" 25.17m
Length of hull	77' 10" 23.70m
Beam (excl. rubbing bands)	19' 11" 6.07m
Draft (at full load) approx.	5'10" 1.77m
Displacement approx. (lightship)	62.5 tonnes
Displacement approx. (half load)	72.8 tonnes
Displacement approx. (LDC, full spec.)	80.9 tonnes
Fuel capacity	7000 litres / 1430 gal / 1717 USG
Water capacity (excl. calorifier)	1400 litres / 308 gal / 370 USG
Hot Water calorifiers	200 litres/ 44 gallon / 53 USG
Black water tank	500 litres / 110 gal / 132 USG
Grey water tank/extended range fuel tank (optional)	1400 litres / 308 gal / 370 USG - grey water 1800 litres / 396 gal / 476 USG - diesel
Bow angle	40°
Waterline length	68'3" 20.81m

ENGINES

MAN V12 (2 x 1650mhp)	Maximum speed range - 26 - 28 knots [†]
MAN V12 (2 x 1900mhp)	Maximum speed range - 29 - 31 knots [†]

[†] Speeds are given at half load condition with boat to standard specification and with no additional equipment on board. Speeds are estimated and given in good faith but without warranty or liability on the part of Princess Yachts Limited.

* Displacements are calculated with 50% fuel and water with liferaft but with no optional equipment fitted or other gear.

DETAILED SPECIFICATION

DECK FITTINGS

- Teak-laid transom platform, transom steps, cockpit deck, stairway to flybridge, side decks, steps to foredeck, flybridge aft sun deck and foredeck seating walkthrough areas
- Reversible hydraulic anchor winches with foredeck, main helm and flybridge controls
- Stemhead roller with automatic anchor launch and retrieve
- Twin anchor system incorporating a Primary anchor - 80kg Galvanised Claw anchor with 100m of 14mm galvanised chain and a Secondary anchor - 50kg Galvanised Claw anchor with 70m of 14mm galvanised chain
- Twin electric stern line mooring winches
- Deck hatch access to chain locker, rope locker and engine room
- Freshwater deck/anchor wash (with both fore and aft deck outlets)
- Stainless steel bow, nose and stern fairleads
- Stainless-steel bow spring cleats (1 pair, port & starboard)
- Stainless-steel stern spring cleats (1 pair, port & starboard)
- Stainless-steel guard rails to foredecks
- Stainless steel flybridge handrails with glazed panel
- Stainless steel handrails to main deck side decks
- Foredeck escape hatch
- Foredeck U-shaped seating area with removable coffee table drinks holders (4)
- Twin coach roof lockers for storage of fenders, ropes and cushions
- PVC rubbing band with stainless-steel

insert

- LED deck level lighting
- Full set of IMCO navigation lights
- Riding light
- Twin beam searchlight with remote controls
- Stern docking lights
- Twin electric horns
- Fuel and water fillers

AFT COCKPIT AND BATHING PLATFORM

- Self-draining
- Upholstered U-shaped seating with storage below (for life-rafts)
- Teak folding dining table
- LED overhead and deck level lighting
- Stainless-steel handrails
- Stern docking (second) station controls portside including engine controls, follow on tiller, thruster controls and emergency engine stop
- Remote control 4.5m telescopic passerelle with automatic folding handrails (1.2m overhang)
- Watertight pantograph door giving access from bathing platform into crew area/engine room
- Engine room to cockpit escape hatch
- Stern lazarette and central transom locker with provision for optional 2x Seabob F5/F5 S/F5 SR storage & charging
- Wash hand basin with mixer tap to portside
- Starboard locker containing remote fuel cocks, manual bilge pump with valve chest and manual controls for automatic fire extinguishers

- Integral stairway to flybridge with teak step treads
- Twin transom gates leading to bathing platform
- Electro-hydraulic teak laid raise/lower bathing platform (550kg SWL)
- Retractable bathing ladder (manual) in side of bathing platform
- Hot and cold transom shower
- 220/240v shore support inlet
- Canvas cockpit cover & table cover
- Naim Uniti Atom audio unit paired with JL Audio M6-650X-L (2) speakers

HELM

- Enclosed pilot house (via sliding doors) with central leather upholstered seat with fore, aft adjustment
- L-shaped companion seating to port (with deployable side table) and optional navigator seat to starboard
- 2-stage Sliding doors to fully enclose or open helm to skylounge area
- Instrument console with display incorporating engine instruments, CCTV, fuel gauges, alarms and rudder position indicator
- Helm position instrument and controls console:
 - power-assisted electro-hydraulic steering (SeaStar)
 - adjustable steering wheel
 - high-speed magnetic compass
 - electronic engine controls
 - bow thruster control
 - anchor winch remote control
 - colour radar (with scanner) and GPS/

- chart plotter (twin 19" displays)
- 1x 15" Böning display (plus additional display at switch panel)
- autopilot
- speed and distance log
- echo sounder with alarm
- VHF with DSC R/T with intercom
- remote control dual searchlight
- horn button (to operate twin electric horns)
- audible and visual alarm for bilge pumps
- engine room fire extinguisher warning system
- Automatic fog horn with loudhailer
- Chart storage
- Drink holders
- Toughened glass screen (clear for night vision) with windscreen de-mist system
- Windscreen wipers with freshwater windscreen wash
- Black mesh sunscreen (for windscreen)
- Bilge pump controls with visual pump running warnings
- 24v and 240v electrical control panel
- Riding light, helm and navigation light control switches
- On/Off & dimmable LED overhead/concealed lighting (24V) with night lighting & scene selection
- Watertight pantograph door giving direct access to starboard side foredeck walkthrough area
- 'V' groove planked timber flooring
- 220/240v outlets (1)
- USB connection points (2)

DETAILED SPECIFICATION

SKY LOUNGE

- Sofa & coffee table
- 55" 4K UHD LED TV on rise and fall
- DVD Blu-ray system with Naim Uniti Atom audio system with speakers (2)
- Sideboard with fridge and storage
- Access stairway to main deck
- Stainless steel opening glass patio doors to aft deck area
- USB connection points (2)
- On/Off & dimmable LED overhead/ concealed lighting (24V) with scene selection
- Tinted panoramic toughened side windows
- Glazed roof panels with powered blinds and slat feature
- Manual roller blinds to all side windows
- Manual curtains to aft door, stowed to port
- 'V' groove planked timber flooring with rug inlay
- 220/240v outlets (1)
- USB connection points (2)

FLYBRIDGE AND FLYBRIDGE FOREDECK

- Flybridge foredeck with twin sunbeds
- Standard layout is Flybridge aft deck area with 2x L-shaped sofas & 2x side tables. Port side L-shaped sofa can be adjusted to face forward or aft.
- Dining table with chairs to accommodate 8 persons (10 for 5 cabin layout)
- Naim Uniti Atom audio system with waterproof JL Audio M6-650X-L speakers (2) to aft end of flybridge
- Clear view hatch to aft cockpit
- Access stairway to aft cockpit

- Stainless-steel handrails with glass balustrade to aft of flybridge deck
- Storage lockers port/starboard
- Aft wet bar unit with sink and tap, waste bin & storage. Solid surface counter top.
- LED overhead and deck level lighting
- Radar mast
- Twin matching whip aerials for VHF R/T and radio
- Covers to exterior furniture, defined as cockpit cover, cockpit table cover, flybridge table cover (includes zip in chair covers), flybridge wetbar cover (2), flybridge L-shaped seat covers (2), flybridge coffee table covers (2), flybridge dinette sofa, flybridge forward sunpad covers (2), foredeck seating cover & foredeck coffee table cover.
- USB connection points (2)

DECK SALOON

- Large L-shaped sofa to port with storage below
- Sofa to starboard with storage below
- Coffee table
- 55" 4K UHD LED TV on rise and fall.
- DVD Blu-ray system and Naim Uniti Atom audio system with speakers (2)
- Servery unit with integrated drinks refrigerator
- Glasses storage sideboard
- Panoramic tinted toughened glass windows port and starboard
- Triple stainless-steel framed cockpit doors
- Access stairway to lower accommodation
- Access stairway to skylounge
- On/Off & dimmable LED overhead/

- concealed lighting (24V) with scene selection
- 220/240v outlets (2)
- USB connection points (4)
- Manual roller blinds to all outboard windows
- Manual curtains on wave track to aft patio doors, stowed to port
- Fitted carpet
- Onboard ethernet router & 4G/5G internet modem

GALLEY

- Granite/quartz worktop
- Open bar/servery layout with powered electric screen to fully enclose galley and sliding door
- Miele 4-zone Induction hob
- Hob extractor
- Miele combination microwave/ convection oven with grill
- 1.5-bowl stainless-steel sink with mixer tap
- Chopping board & storage
- Full height refrigerator/deep freezer
- Dishwasher
- Icemaker
- Waste bin
- Drawers and storage cupboards
- Manual roller blinds to window
- Pantograph door to starboard side deck
- LED overhead and task lighting (24V)
- 220/240v outlets (4)
- 'V' groove planked timber flooring
- Access to deck saloon via sliding door
- Access to dinette via sliding door

FORWARD DINING AREA

- Dining table with aft facing dinette seating and dining chairs (4)
- Upholstered leather Sideboard unit with crockery, glassware and general storage
- Entertainment unit with Naim Uniti Atom audio system and speakers (2)
- 220/240v power outlets (2)
- USB connection points (2)
- On/Off & dimmable LED overhead/ concealed lighting (24V) with scene selection
- Full-height panoramic tinted toughened glass port window
- Opening porthole (2) – note this is 3x when optional main deck master is specified
- Manual roller blinds to outboard & forward windows
- Fitted carpet

DAY TOILET

- Electric freshwater toilet
- Wash hand basin and worktop in thermoformed Solid Surface
- Storage cupboard
- Manual tension venetian blind
- Solid Surface flooring

ACCOMMODATION

- All cabins and bathrooms feature opening portholes and air conditioning
- All cabins feature 220/240v power points
- All en-suites feature 240v shaver points

DETAILED SPECIFICATION

MASTER STATEROOM

- Large double bed with bedside tables and drawers below
- Dressing area with full length mirror, hanging, shelf and drawer storage
- Built-in safe
- Port side dressing table with integrated mirror, chair, storage drawers and cupboards
- Starboard side sofa with storage units
- 55" 4K UHD LED TV
- DVD Blu-ray system connected to Naim Uniti Atom audio system with speakers (2) and subwoofer
- Panoramic windows including opening portholes
- Roman blinds to hull windows
- On/Off & dimmable LED overhead/ concealed lighting (24V) with scene selection
- 220/240v outlets (2)
- USB connection points (4)
- Fitted carpet

EN-SUITE BATHROOM

- Twin washbasins and worktop in thermoformed Solid Surface
- Mirror
- Storage lockers
- Electric freshwater Toilet and option of separate bidet
- Shower compartment with automatic pump out
- Extractor fan
- Heated towel rail
- Window with opening porthole

- Manual tension venetian blind
- LED overhead and concealed lighting (24V)
- Bathroom accessories
- Solid surface flooring, with synthetic teak applied to shower area

FORWARD STATEROOM

- Large double bed with bedside tables and drawers below
- Built-in safe
- Twin double wardrobes
- Port side dressing table with integrated mirror, stool & storage drawers
- 43" 4K UHD LED TV
- DVD Blu-ray system connected to Naim Uniti Atom audio system with speakers (2) and subwoofer
- Panoramic windows including opening portholes
- Roman blinds and manual sheer roller blinds to hull windows
- On/Off & dimmable LED overhead/ concealed lighting (24V) with scene selection
- 220/240v outlets (2)
- USB connection points (4)
- Fitted carpet

EN-SUITE BATHROOM

- Washbasin and worktop in thermoformed Solid Surface
- Mirror
- Storage lockers
- Electric freshwater Toilet
- Shower compartment with automatic pump out
- Extractor fan
- Window with opening porthole
- Manual tension venetian blind
- LED overhead and concealed lighting (24V)
- Bathroom accessories
- Solid surface flooring, with Synthetic teak applied to shower area

STARBOARD GUEST CABIN

- Double bed with drawers below
- Bedside table
- Dressing table with stool
- Wardrobe with shelves
- Mirror
- Storage lockers
- Window with opening portholes
- Roman blinds
- On/Off & dimmable LED overhead/ concealed lighting (24V) with scene selection
- Individual berth lights
- 220/240v outlets (1)
- USB connection point (2)
- Fitted carpet

EN-SUITE BATHROOM

- Electric freshwater toilet
- Washbasin and worktop in thermoformed Solid Surface
- Mirror
- Storage lockers
- Shower compartment with automatic pump out
- Extractor fan
- Windows with opening porthole
- Manual tension venetian blind
- LED overhead and concealed lighting (24V)
- Bathroom accessories
- Solid surface flooring, with Synthetic teak applied to shower area

PORT GUEST CABIN

- Two single beds with drawers below
- Bedside table
- Wardrobe with shelves
- Mirror
- Storage lockers
- Window with opening portholes
- Roman blinds
- On/Off & dimmable LED overhead/ concealed lighting (24V) with scene selection
- Individual berth lights
- 220/240v outlets (1)
- USB connection point (2)
- Fitted carpet

DETAILED SPECIFICATION

EN-SUITE BATHROOM

- Electric freshwater toilet
- Washbasin and worktop in thermoformed Solid Surface
- Mirror
- Storage lockers
- Shower compartment with automatic pump out
- Extractor fan
- Windows with opening porthole
- Manual tension venetian blind
- LED overhead and concealed lighting (24V)
- Bathroom accessories
- Solid surface flooring, with Synthetic teak applied to shower area

LOBBY / PASSAGEWAY AREA

- Linen cupboard below companionway stairs
- Top-loading storage unity outboard in window side liner
- Space for optional combination washer/dryer below companionway stairs
- On/Off & dimmable LED overhead/concealed lighting (24V) with scene selection
- Fitted carpet
- Manual roller blind to window

CREW QUARTERS

N.B. All lower crew furniture is in white laminate, with Koko White Solid Surface (satin finish) bathroom vanity unit tops and Koko White Solid Surface (satin finish) bathroom floors

CREW CABIN PORT

- Twin single beds with storage below
- Wardrobe with shelf
- Mirror
- Storage lockers
- Opening porthole (2, port and aft) and venetian blinds
- LED overhead lighting (24V)
- Individual berth light
- 220/240v outlets (1)
- USB Connection points (2)
- Non-slip safety flooring

CREW CABIN STARBOARD

- Single bed with storage below
- Wardrobe
- Mirror
- Storage locker
- Opening porthole and venetian blind
- LED overhead lighting (24V)
- Individual berth light
- 220/240v outlets (1)
- USB Connection points (2)
- Non-slip safety flooring

CREW BATHROOM

- Electric freshwater toilet
- Washbasin with Koko White (satin finish) solid surface worktop
- Mirror
- Storage lockers
- Shower compartment with automatic pump out
- Extractor fan
- LED overhead lighting (24V)
- Bathroom accessories
- Solid Surface flooring in Koko white (satin finish)

CREW AREA

- Access from transom door
- Access to engine room
- Washing machine and separate tumble dryer (stacked). for all option scenarios including when Glendinning equipment is specified
- LED overhead lighting (24V)
- Non slip safety flooring

POWER AND DRIVE SYSTEMS

- Forward & aft engine room bulkheads and engine room deck head to be insulated.
- High volume air intakes
- Engine room extractor fan with electronic time delay
- Engine exhaust silencers and water-cooled exhausts
- Forward and aft engine room bulkheads integrally bonded including acoustafoam layers
- Engines flexibly mounted
- Automatic fire extinguisher with remote override control
- Automatic and manual bilge pumps
- Propeller shafts in Marinemet
- 5-bladed propellers in nickel aluminium bronze
- High speed balanced rudders
- Cathodic protection for stern gear
- Stern gear, engines, fuel tank fillers, etc all electrically bonded
- LED Engine room lighting
- Engine room access from transom (via crew) and cockpit deck hatch
- Power-assisted electro-hydraulic steering system
- Electronic engine and gear shift controls
- Bow thruster with dual-station controls
- Fresh water supply point in engine room
- Dripless self-aligning shaft seals

DETAILED SPECIFICATION

ELECTRICAL SYSTEMS

24 Volt:

- 4 x heavy duty batteries for engine starting
- 6 x heavy duty auxiliary batteries
- Battery link facility with remote control at helm position
- Both battery banks are charged using a voltage sensitive relay that parallels both battery banks when a charging source is present
- 1 x 100A charger, 1x 100A-3500W charger/inverter & 1x 6A charger (for generator battery)
- Remote battery isolator control switches at main switch panel position
- Circuit breakers on all circuits
- 24v to 12v converters for certain navigation and radio circuits
- 24v to 240v/50Hz inverter for saloon a/v, galley fridge and optional telephone system
- Galvanic isolation system

220/240 Volt:

- European specification: Up to 2 x 27kW @ 50Hz diesel generators in own sound shields, water cooled and with specially silenced exhaust systems and with remote operation from main control panel (single generator as standard)
- USA specification: Up to 2 x 29kW @ 60Hz diesel generators in own sound shields, water cooled and with specially silenced exhaust systems and with remote operation from main control panel (single generator as standard)
- 220/240v shore power inlet
- Shore power/generator change over

control operated from main control panel

- Polarity check system
- Earth leakage safety trip, circuit breakers on all circuits
- Power points (240v) in all cabins and living areas, helm position and galley
- 240v shaver points in washrooms
- 3kW immersion heater for fresh water
- CCTV system with camera in aft cockpit and two fixed cameras in engine room, displayed on helm MFDs

FUEL SYSTEM

- Main fuel tank with a total 7000 litres of fuel capacity (8800 litres if long range fuel tank is specified).
- Fuel fillers to port and starboard
- High capacity duplex fuel filters/water traps with integral changeover valves and water sensors connected to alarms at helm position
- Remote fuel isolation controls in cockpit locker for main engines and generators
- Fuel gauges at helm position

AIR CONDITIONING SYSTEM

- Air Conditioning/heating reverse cycle
- 270,000 BTU fan capacity with 216,000 BTU chiller capacity
- suitable for temperatures to 40°C (tropical)
- incorporating a windscreen demist facility.
- The standard generator is suitable.
- Outlets in all areas and any concentrations of AV equipment (if required)

WATER SYSTEM

- Fresh water tanks giving 1500 litres capacity plus 200 litres hot water calorifier
- Automatic water pump with filter (80l/min)
- Water level gauge
- Deck filler
- Pump circuit breaker at main switch panel
- Electric freshwater toilet system linked to 500 litres holding tank, content gauge and low noise electric overboard discharge, with macerator backup system as well as dockside discharge system
- Optional Grey water tank to take waste water from sinks/showers, washing machine(s) and dishwasher

BILGE PUMPS

- Automatic/manual override electric bilge pumps in engine room, rudder area and forward accommodation
- High capacity manual bilge system with suction points in the same areas
- Electric bilge pumps have controls and warning lights with audible alarm at helm position

EXTINGUISHERS / FIRE CONTROL SYSTEMS

- Automatic engine room fire extinguisher system (with manual override) and warning system at helm position providing automatic shutdown of engines, generators and ventilation fans
- Hand operated fire extinguishers in all guest cabins, galley, crew quarters and flybridge

OTHER STANDARD EQUIPMENT

- Ensign staff
- Fenders (8)
- Mooring warps (4)
- First Aid kit
- Set of towels (8 large, 8 hand), NB : 10 sets with 5 cabin layout
- Bed cover supplied to all cabins (except crew cabin)
- Complete set of Lucrezia crystal glassware (8 settings consisting of tumbler, highball and wine glasses) NB : 10 settings with 5 cabin layout
- Set of Sous Le Soleil crockery (8 settings consisting of plate, cake plate, dessert plate, bowl, cup & saucer) NB : 10 settings with 5 cabin layout
- Set of stainless steel cutlery (8 settings of David Mellor "Paris" cutlery 7 pieces) NB : 10 settings with 5 cabin layout
- Tool kit
- Boat hook
- Owner's manual and engine manual
- Ship's document case

DETAILED SPECIFICATION

FINISHES

- Teak-laid decks to all external deck areas (including flybridge)
- V grooved planked timber floor to galley, skylounge and wheelhouse
- Furniture in choice of Alba oak, Rovere oak in satin finish as standard. Silver Oak or walnut with satin or gloss finishes available as an option.
- Solid Surface in all bathroom suites in guest accommodation (including day head)
- Thermoformed Solid Surface wash hand basin counter tops in all bathroom suites and day head
- Galley worktop in granite or quartz
- Choice of high-quality carpets and fabrics from extensive range
- Curtains, blinds or sunscreens to all windows and portholes
- Crew cabins have fitted carpet, Crew bathrooms have Solid Surface floors and countertops
- Non-slip safety flooring to crew mess and passageway

Please note the right is reserved to add modify or delete from this specification.

FOR FURTHER INFORMATION

PLEASE CONTACT:

Your respective regional sales manager

Information disclaimer:

The details contained in this document were correct at the time of publication. Princess Yachts Limited reserves the right to modify or change the specification.

