



ADA 50Z / 2025 | € 26,500,000 EX VAT


AQUA MARINA
YACHTS
EST. 1995



The Yacht



The Yacht



The Yacht



The Yacht



The Yacht



Saloon



Saloon



Saloon



Dinning Area



Owner's Cabin



Owner's Cabin



Owner's Cabin



Owner's Cabin



Owner's Bathroom



Owner's Bathroom



Owner's Bathroom



VIP Cabin



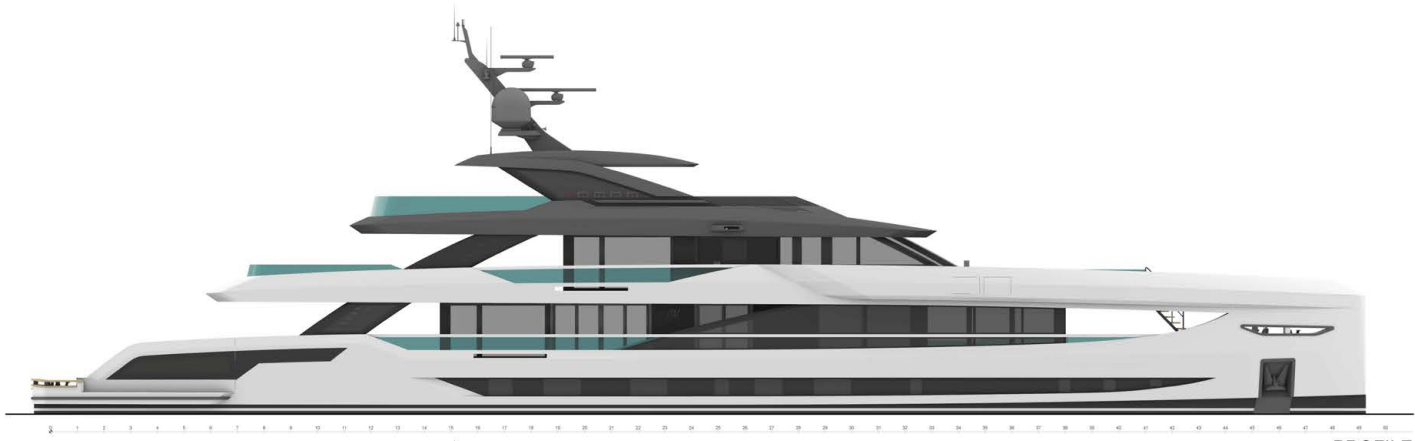
VIP Cabin



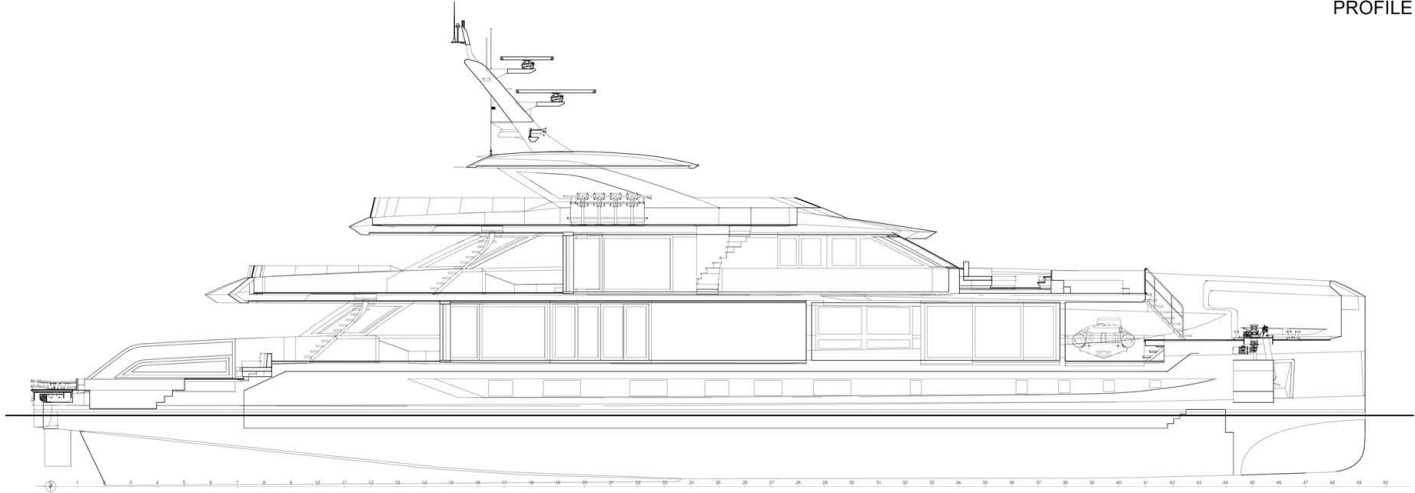
VIP Cabin



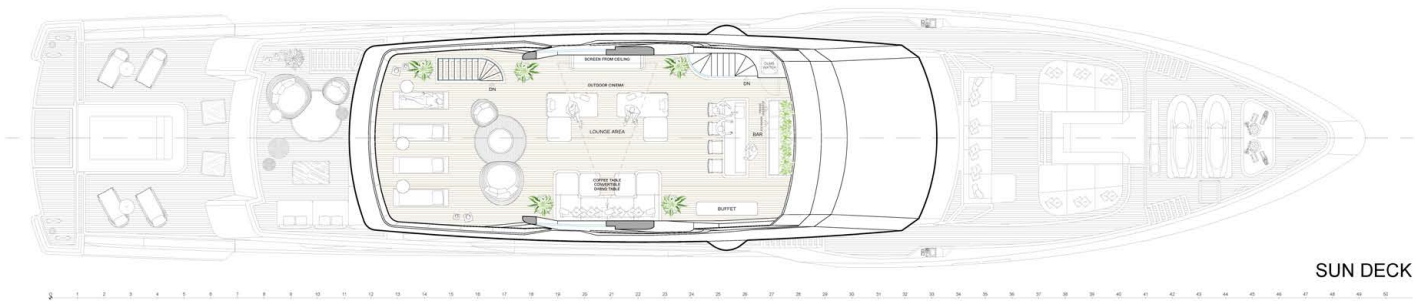
VIP Bathroom



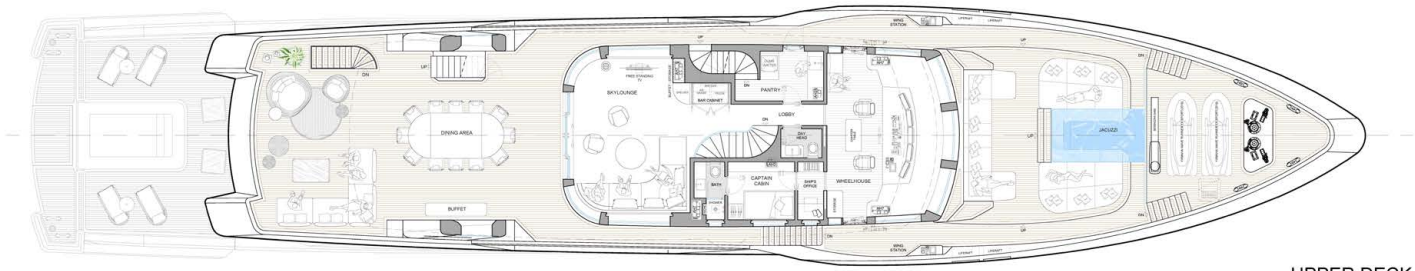
PROFILE



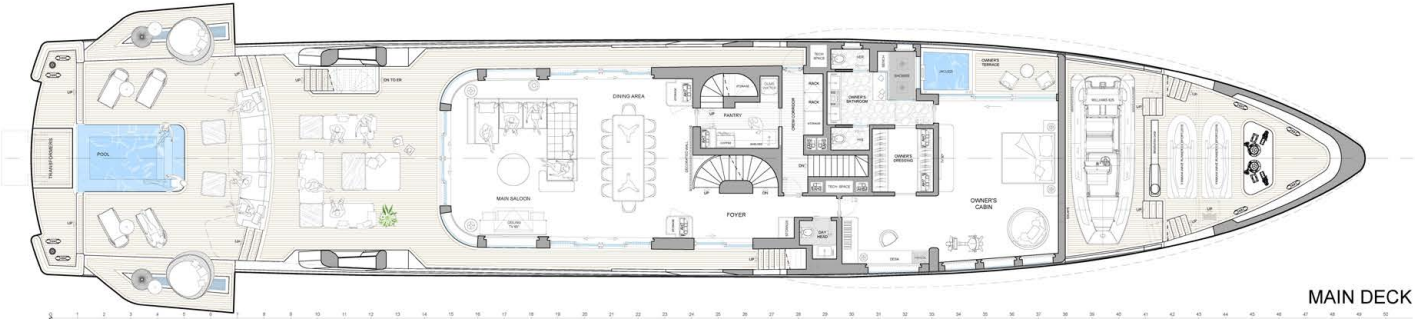
LONGITUDINAL SECTION



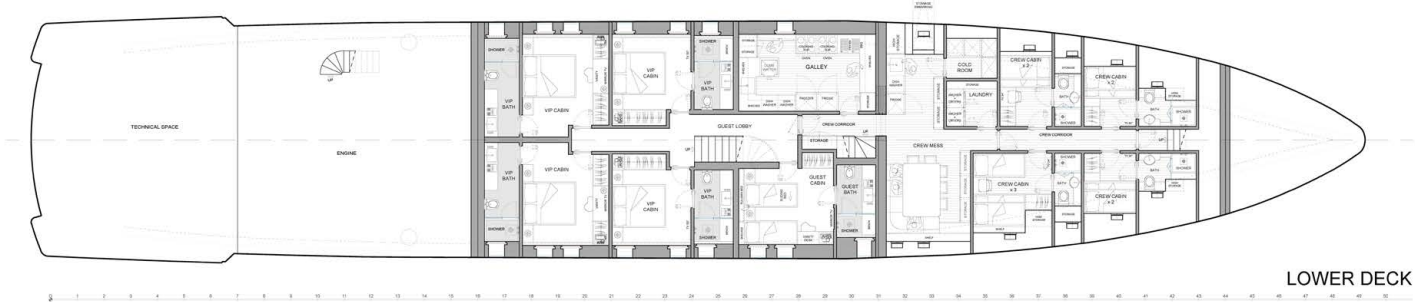
SUN DECK



UPPER DECK



MAIN DECK



LOWER DECK

SPECIFICATIONS

- Length overall: 49.9 m
- Beam max: 9.00 m
- Draft: 2.60 m
- Displacement full load: 495 t
- Hull material: Steel
- GT: 497 t
- Builder: ADA Yacht Works
- Concept and exterior Design: ULDAS Yacht Design
- Interior designer: LUCA DINI Design
- Naval Architecture: GINTON Naval Architect

PERFORMANCES

- Max speed: 15 Knots
- Cruising speed: 12 Knots

ENGINES

- 2x 974 kW@2100 rpm – MAN D2862 LE469

GENERATORS

- 2x 80 kW, 1x55 kW Kohler

TANK CAPACITY

- Fuel capacity: 50,000 l
- Fresh water capacity: 13,000 l
- Grey and black water capacity: 8,000 l

ACCOMMODATIONS

- Cabins: 6 + 5 crew
- Berths: 12 + 9 crew
- Head compartments: 8

MAIN & ELECTRICAL SYSTEMS

- Shore Power supply
- Switchgear
- Alarm monitoring system
- Cooling and seawater system
- Fuel system (with built-in pumps)
- Bilge pump – 400VAC (Gianneschi)
- Fire system
- 2x hot water heaters (250 l)
- Dock water softener
- Fresh water maker 2x350 L (Idromarin)
- Sewage system
- Air conditioning system
- Exhaust system
- Bow Thruster (CMC)
- 4x Stabilizer (Hs 120 – CMC)
- Steering & Mooring system
- Ceiling lights through-out the yacht (LED)
- Dimmer controller in saloon
- Reading lights, stairwell and wall lights
- 10 pcs underwater lights

NAVIGATION EQUIPMENTS & ENTERTAINMENT

- 4x Chartplotter (GS165- 24'')
- Depth sounder (DST800 LP TH bronze)
- Gps (RS130)
- Rada (4Kw)
- VHF (Ray 260)
- Autopilot (EV-400 Sail)
- 2x I70 Colour instrument for speed, wind, depth
- Epirb
- 90 cm Sat TV antenna
- 50" Samsung LED TVs in guest cabins
- 80" Samsung LED TVs in owner's cabin
- 65" Samsung LED TV in the Saloon
- 32" Samsung LED TVs in crew mess
- 55" Samsung LED TVs in upper Saloon

INTERIOR - CABINS

Owner's Cabin

- Dressing room
- Vanity
- Office desk
- Safe box
- Owner' terrace
- Jacuzzi on owner's terrace
- 220 V sockets with USB
- 4X ceiling speakers
- Fire extinguishing bottle (2 kg)
- Shower
- Electrical head

Guest cabins

- Double beds in VIP cabins
- 2x single beds in Guest cabins / opt. to convert to GYM
- Vanity
- Locker
- 2X ceiling speakers
- Fire extinguishing bottle (2 kg)
- Shower
- Electrical head

INTERIOR

Saloon

- Oval table for 12 people
- L shape sofa
- Coffee table
- Decorated walls
- Access from deck
- Day head
- Pantry
- Electrical sliding doors (1 entrance, 2x sides and 1 for the lobby)
- 6x speakers for sound system
- Fire extinguishing bottle (2 kg)

INTERIOR

Galley

- Stainless steel counter top
- Stainless steel cabinets and lockers
- Microwave
- Steam oven (Rational)
- Electrical cooker (Electrolux)
- Refrigerator (Electrolux)
- Deepfreeze (Electrolux)
- Garbage disposal
- Dumbwaiter
- Dishwasher
- Icemaker (Isotherm)

EXTERIOR

- Filling caps for water and fuel (on fore deck)
- 2x Electrical Windlass (Hidromarin)- on fore deck
- Electrical bow thruster 100kW (CMC) – on fore deck
- Chain locker with hatch
- 2 sets of chain
- 2 sets of Anchor
- Fore peak hatch
- Tender / Jet-ski door with beam crane on fore deck
- Jacuzzi with sun pads and U shape seating on fore deck
- Removable side boarding ladder
- Transformer on Main deck
- Pasarella on Main deck
- 2x wing side door on main deck
- Pool (on main deck)
- Loose seating group
- Loose seating group
- Entrance to Saloon
- Stairs to flybridge deck
- Removable deck shower
- Removable swim ladder
- Owner's cabin and terrace with Jacuzzi on Upper deck
- Electrical sliding door to the owner's Terrace
- Dining table on Sundeck
- Bar on Sun deck
- Seating group

DISCLAIMER

All speeds, measurements, capacities, consumptions, etc. may be approximate or estimated. Specifications provided for information only. Data was obtained from sources believed to be reliable and is not guaranteed by owner or brokers. Buyer assumes the responsibility to ascertain the correctness of all data contained herein and otherwise provided and must instruct his agent and surveyors to confirm all details for accuracy prior to purchase. Subject to prior sale, price and inventory change, or withdrawal from market without notice.



1 Ha'tzedef St. Herzeliya Marina, Israel 4655201 | Tel. 972-9-9513248
Fax. 972-9-9513247 | info@aquamarina.co.il | www.aquamarina.co.il