



PARDO 43 – NEW 2024 | Hand Over: February 2024 | € 1,100,000<sub>EX VAT</sub>





---

The Yacht

---



---

The Yacht

---



---

The Yacht

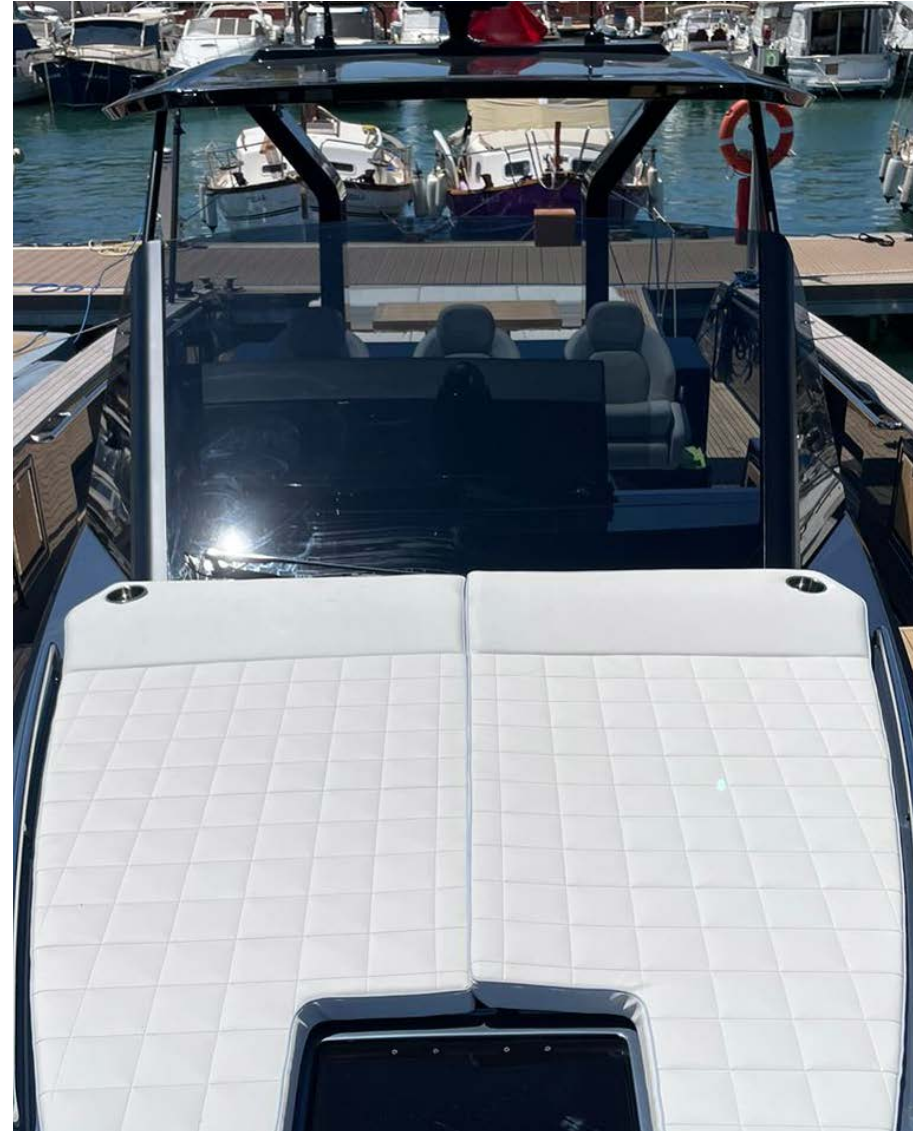
---



---

Cockpit- Sunbathing Matress & Table

---



---

Bow - Sunbathing Mattress

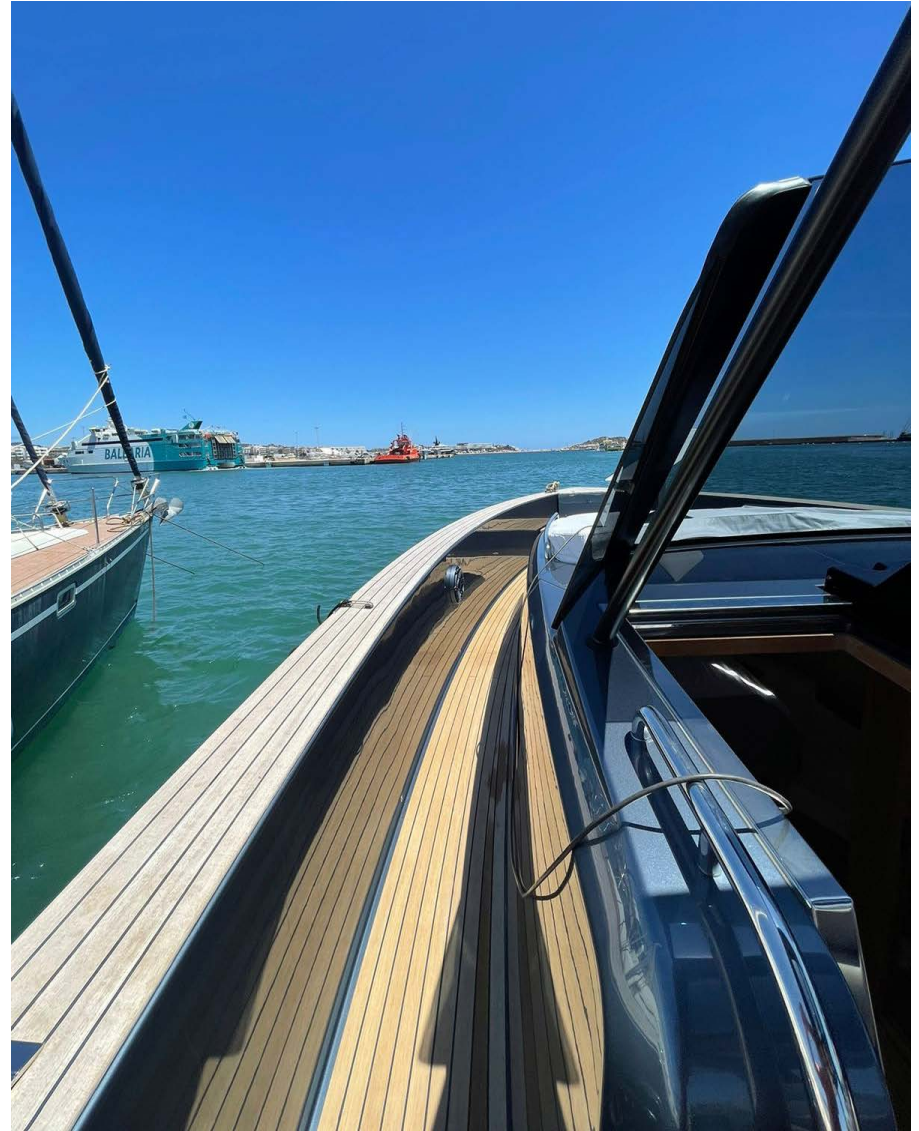
---



---

Port Side

---



---

Port Side

---





---

Starboard Side

---



---

Starboard Side

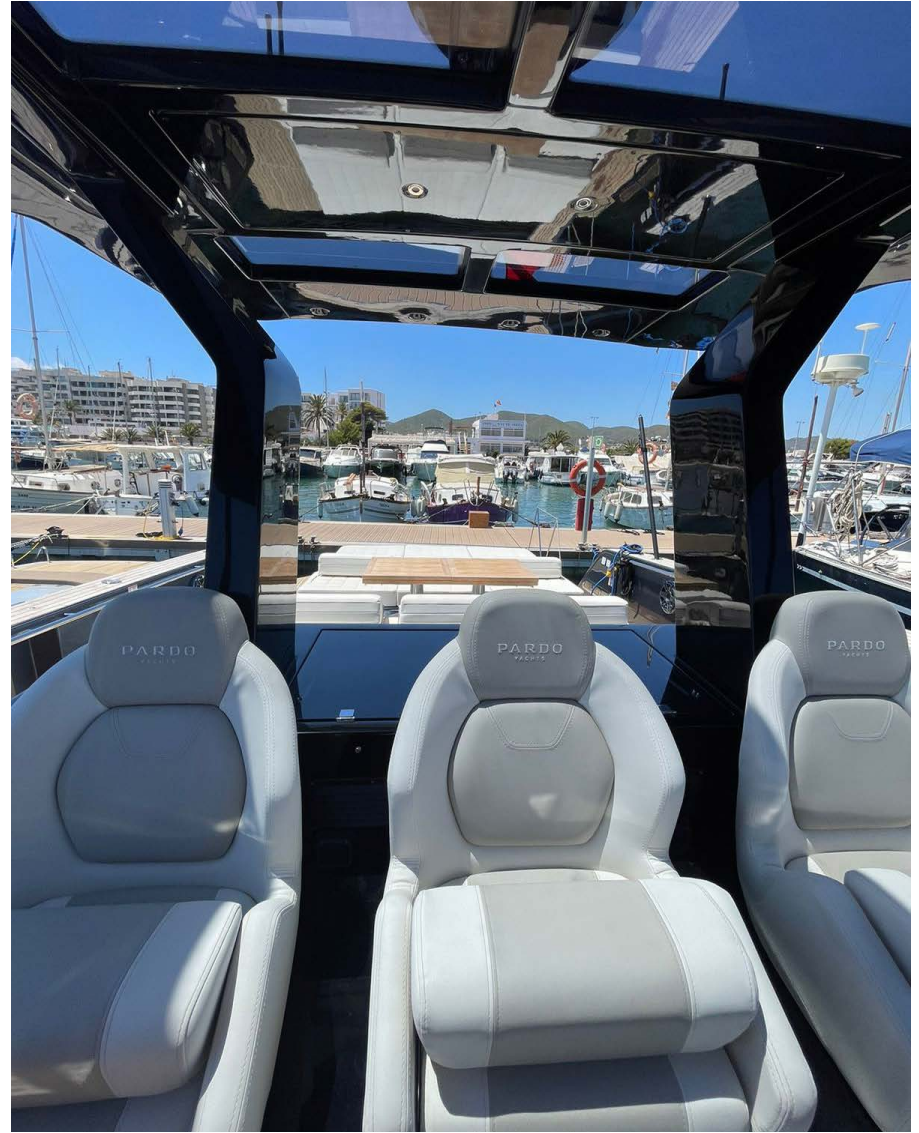
---



---

Control Panel

---



---

Control Panel

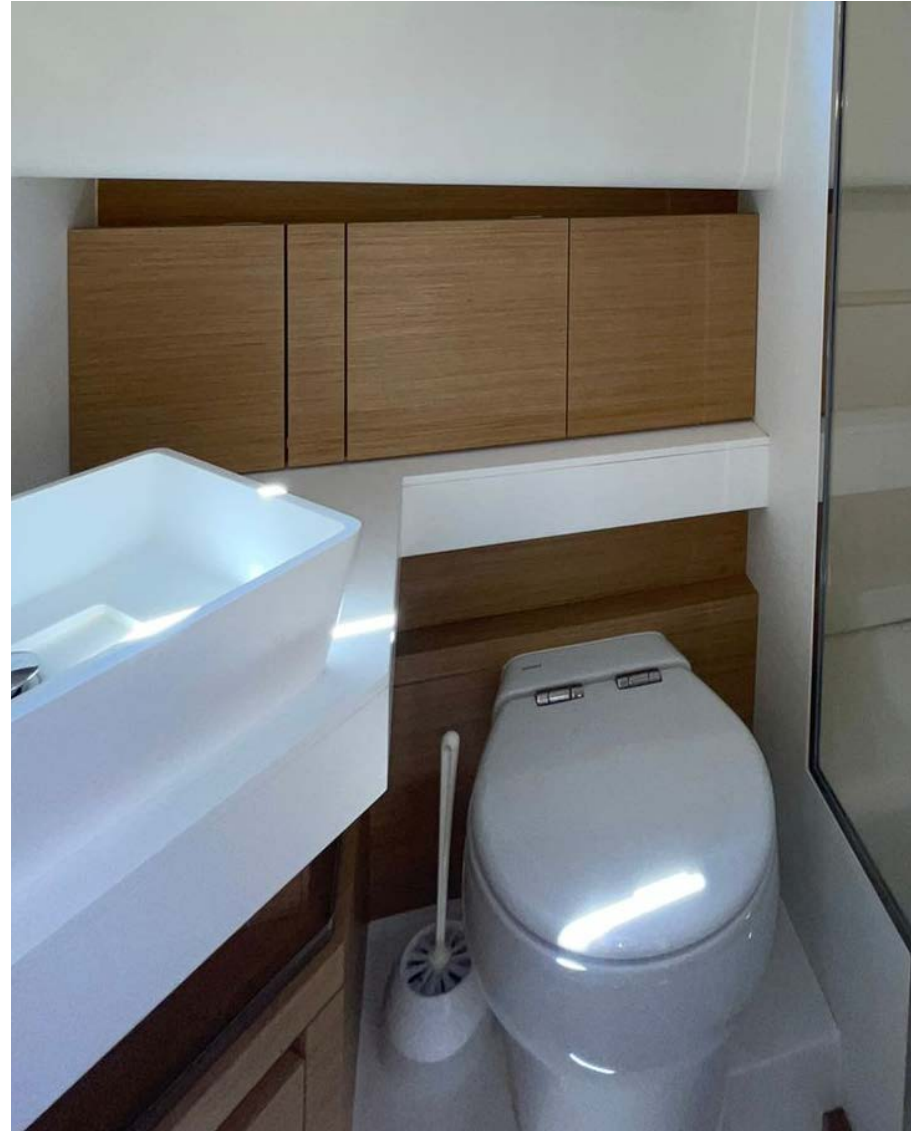
---



---

Master Cabin

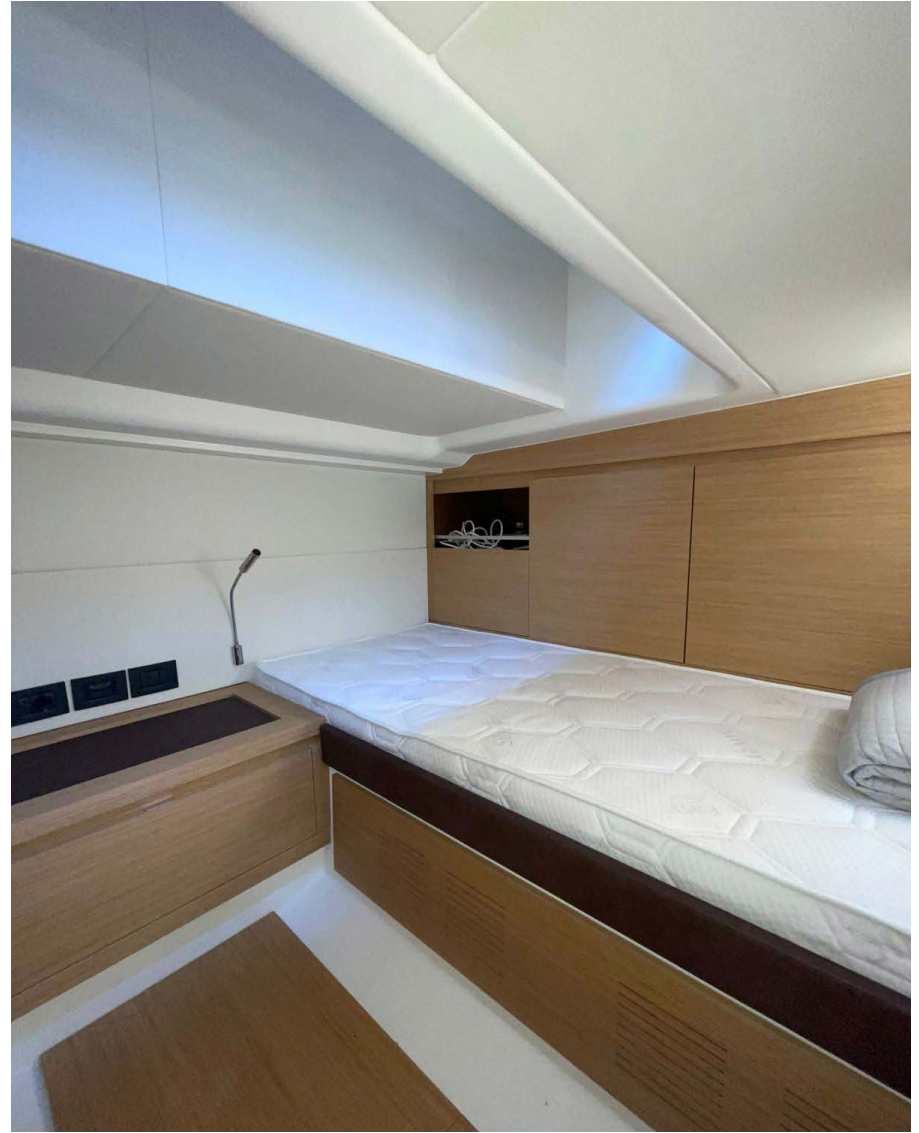
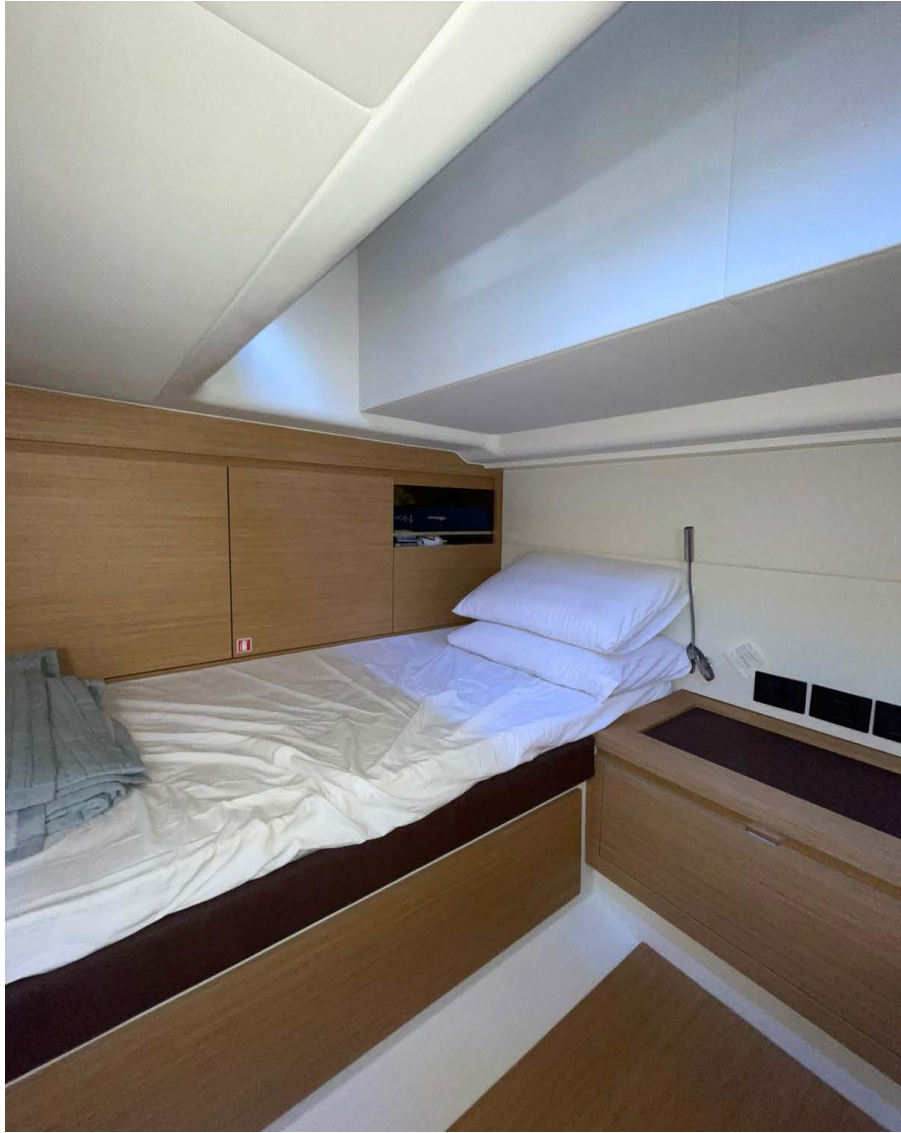
---



---

Bathroom

---



---

Guest Cabin

---



---

Layout

---



## **PARDO 43 – NEW 2024**

HAND OVER: FEBRUARY 2024

### **SPECIFICATION**

- Length: 12.8 m (14 m with extended platform)
- Beam: 4.20 m
- Draft: 1.05m
- Displacement: 9.9 T
- Fuel: 1200L
- Water: 300L
- Engines: 2 x Volvo IPS 650 (D6 480 Hp) - pre-filter racor (water alarm) DIESEL WITH JOYSTICK
- Hull Color: Byron Blue
- Panited Deck & Kitchen Area: Black
- Upholstery: Silvertex Ice

## **OPTIONS**

- Carbon T Top
- Interceptor
- Hydraulic Gangway
- Long Bayting Platform With Hydraulic Lift
- Cockpit table with electric hi-lo movement and cushions on the top
- Aft sunbed with electric opening tender garage
- Two extra fridges in aft seat bench
- Stainless steel pole for water ski and wakeboard
- Aft awning with removable poles
- Glass windshield
- Guest's cabin with 2 twin beds
- Stabilizer 13K (gyroscope)
- 2500W inverter
- Kohler Generator 9 Kw
- T-Top led lights
- Courtesy LED lights on deck and on walking around
- Reversible tropical air conditioning hot / cold
- 2 x VOLVO GLASS COCKPIT multifunction 16" screen MFD-8616

## **OPTIONS**

- Garmin Fantom 18X 50W 48MN Radome Radar Antenna
- Garmin VHF 315i
- Garmin AIS-800 Rx/Tx
- Volvo autopilot
- 22" LED flat tv with DVB - T antenna
- Entertainment Ultra-High Performance Package
- Upgrade grills from classic to sport
- Trefoil anchor electric system (chain length: 50 mt; chain diameter:  $\varnothing$  1; weight: 15 kg), with video camera on chart plotter
- Fenders with cover (no. 8) and mooring lines
- Chain counter
- Bow Thruster
- Towing Eye
- 100 m extra chain
- Upholstery piping

**DISCLAIMER**

All speeds, measurements, capacities, consumptions, etc. may be approximate or estimated. Specifications provided for information only. Data was obtained from sources believed to be reliable and is not guaranteed by owner or brokers. Buyer assumes the responsibility to ascertain the correctness of all data contained herein and otherwise provided and must instruct his agent and surveyors to confirm all details for accuracy prior to purchase. Subject to prior sale, price and inventory change, or withdrawal from market without notice.



1 Ha'tzedef St. Herzeliya Marina, Israel 4655201 | WhatsApp. 972-54-3997399  
Tel. 972-9-9513248 | [info@aquamarina.co.il](mailto:info@aquamarina.co.il) | [www.aquamarina.co.il](http://www.aquamarina.co.il)